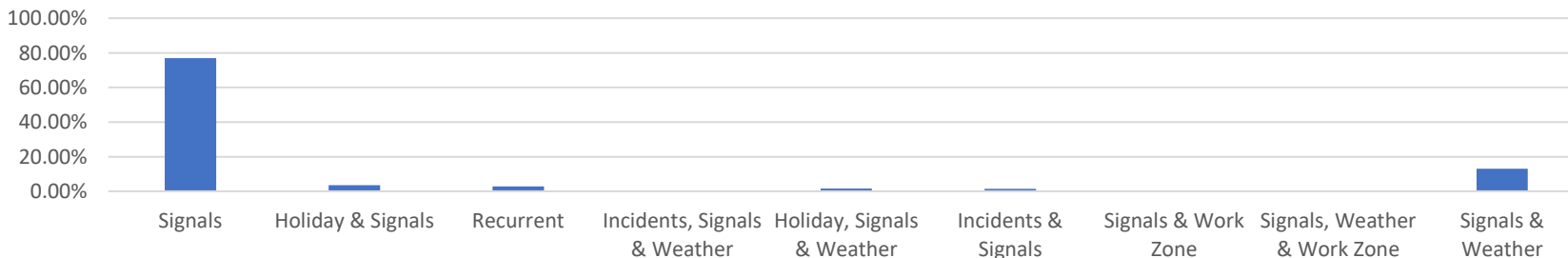


### Roadway Operating Observation's

Industrial Park Road and Friendly's Way(jug handle) experience significant backups during evening commute times. As can be seen in the graph below this is mostly (78%) due to intersection capacity. The Level of Travel Time Reliability (LOTTR) was measured at 1.5. According to the Federal Highway Administration (FHWA) an LOTTR of 1.5 or greater is considered unreliable. For additional information regarding congestion measures please refer to [Chapter 8 of the 2024 Regional Transportation Plan](#). Exit 41 routinely backs up onto Interstate I-90 westbound during the evening peak hours. It was noted during the field visit that the triangle island observed in the image above has been removed. Staff will need to verify if additional changes are being made to this location.

Congestion Causes

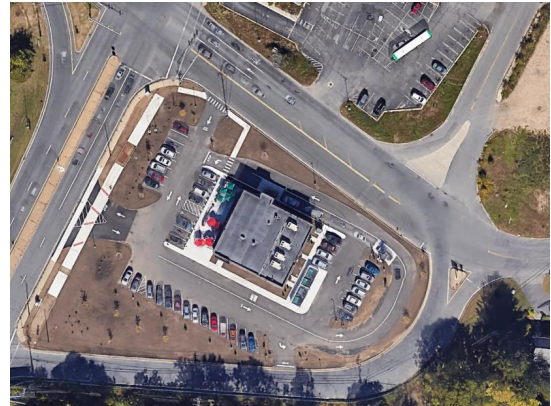


### Delay Breakdown - 2022

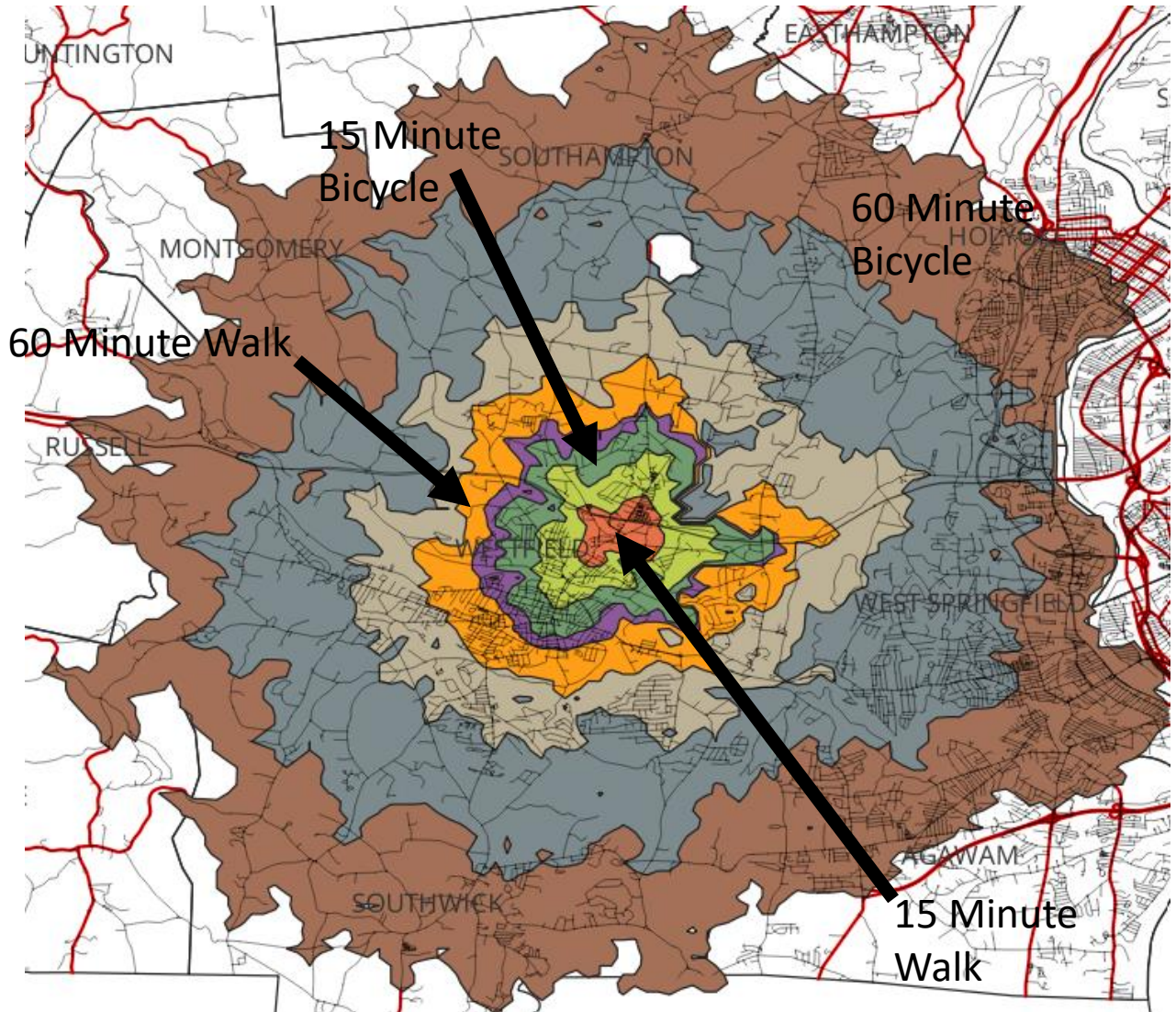
<b>Delay:</b>	2.74 TTI, 1.39 LOTTR
<b>Vehicle Miles Traveled:</b>	1,119,469 miles
<b>Vehicle Miles Traveled:</b>	1,007,522 miles (Passenger)
<b>Vehicle Miles Traveled:</b>	111,947 miles (Commercial)

### Profile

- AADT – 6,888** (2022) Industrial Park Road
- 10,593** (2022) Friendly's Way W/O Industrial PK
- Sidewalks** - Located on south side of Route 10/202
- Bike Lanes** – Not observed
- Cross Walks** – Located on south side of Route 10/202



### Bicycle and Pedestrian Observation's



### Safety Compass



Although this location is not on of the top crash locations in the 2017-2019 Safety Compass, a non motorist related crashes as well as multiple motor vehicle crashes were observed near this location. [Click Here](#) to view most recent Safety Compass.

### Pedestrian and Bicycle

Sidewalks and painted bike lanes are located on both the north the south side of Main Street, buton actuated pedestrian signals are available at all approaches to the intersection. As part of project 605222, the Main Street corridor was upgraded to modernize the corridor to meet current needs. These needs included pedestrian signals as well as bicycle lanes along the Main Street corridor.

### TIP Project Information

- Project #:** 608487 **FFY Year:** 2027 **Cost:** \$8,629,346 **TEC Score:** 31.5
- Description:** WESTFIELD- RESURFACING AND RELATED WORK ON ROUTE 10 AND 202 INCLUDING SHARE USE PATH AND PEDESTRIAN UPGRADES
- Project #:** NA **FFY Year:** NA **Cost:** TBD **TEC Score:** NA
- Description:** [I-90 INTERCHANGE 41 IMPROVMENTS](#)