



Roadway Operating Observation's

Route 9 is an urban principal arterial running east / west through Hampshire County proving access to Berkshire County to the west and Worcester County to the east. Route 116 is an urban principal arterial running north / south through Hampden and Hampshire County. The eastbound left turn from Route 9 to Route 116 experiences the highest rate of congestion, with a Travel Time Index (TTI) of 4.49, a TTI of 1 is considered free flow. The Level of Travel Time Reliability (LOTR) was measured at 1.5. According to the Federal Highway Administration (FHWA) an LOTTR of 1.5 or greater is considered unreliable. For additional information regarding congestion measures please refer to [Chapter 8 of the 2024 Regional Transportation Plan](#).

Delay Breakdown - 2022

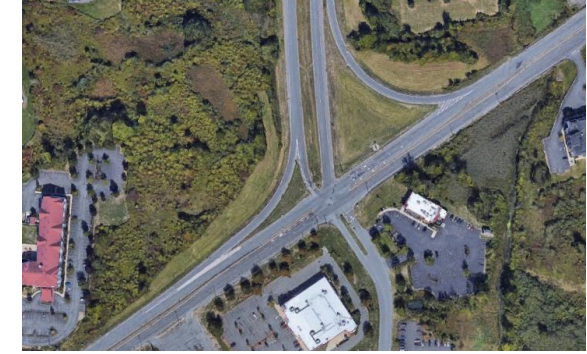
Delay:	40,664 hours per year
Total Hours of Delay:	8,673 hours (Persons)
Total Hours of Delay:	7,080 hours (vehicle)
Vehicle Miles Traveled:	43,645 million miles
Vehicle Miles Traveled:	39,,280,413 miles (Passenger)
Vehicle Miles Traveled:	4,364,490 miles (Commercial)

Causes of Congestion



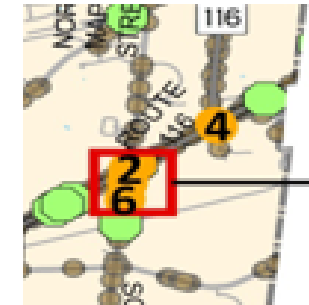
Profile

AADT – 17,243 (2022) Route 9 E/O Route 116 / **9,202** Route 116 N/O Route 9.
Sidewalks - Located on south side of Route 9
Bike Lanes – Painted bike lanes were observed on both the north and south side of Route 9.
Cross Walks – South side of Route 9 at the intersection with Westgate Center Drive (Pedestrian Phase)



Bicycle and Pedestrian Observation's

Safety Compass



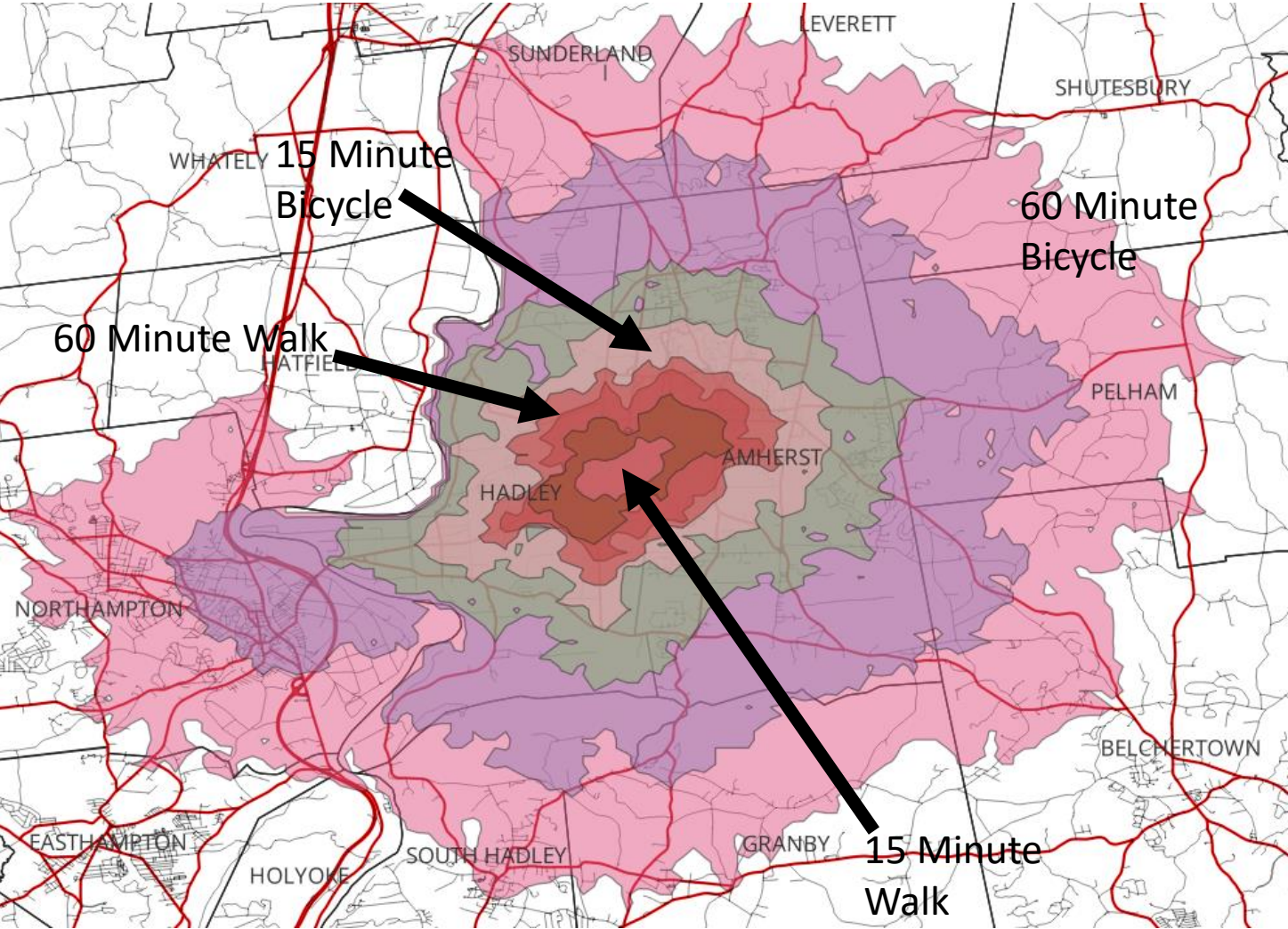
This location is the 4th ranked location in the most recent Safety Compass for the Town of Hadley. 19 crashes were recorded from 2017-2019 resulting in an EPDO score of 99. [Click Here](#) to view most recent Safety Compass.

Pedestrian and Bicycle

Sidewalks are located on the south side of Route 9, pedestrian signals are available at the West Gate Center Drive crossing. Marked bike lanes are painted on both shoulders of Route 9. According to the [PVPC Safety Compass](#), this intersection is near the 4th ranked crash location in Hadley. Multiple TIP projects are currently under construction in close proximity to this location, those projects include significant bicycle and pedestrian infrastructure elements. It will be important to continue to monitor the impacts to evaluate the impacts of those projects.

TIP Project Information

- Project #:** 605032 **FFY Year:** 2021 **Cost:** \$25,665,000 **TEC Score:** 60
Description: HADLEY- RECONSTRUCTION ON ROUTE 9, FROM MIDDLE STREET TO MAPLE/SOUTH MAPLE STREET. Construction September 2023
- Project #:** 608084 **FFY Year:** 2021 **Cost:** \$5,214,000 **TEC Score:** 55.5
Description: AMHERST- IMPROVEMENTS & RELATED WORK ON ROUTES 9 & 116, FROM UNIVERSITY DRIVE TO SOUTH PLEASANT STREET. Construction September 2023



Data provided by [RITIS](#)