

Transportation Study

Mill Cooper & Holland Intersection



Prepared by:



Pioneer Valley
Planning
Commission

August 2023

Prepared in cooperation with the Massachusetts Department of Transportation and the U.S. Department of Transportation – Federal Highway Administration. The views and opinions of the authors (or agency) expressed herein do not necessarily state or reflect those of the U.S. Department of Transportation.

The Pioneer Valley Metropolitan Planning Organization (PVMPO) and the Massachusetts Department of Transportation (MassDOT) comply with Title VI of the Civil Rights Act of 1964, which prohibits discrimination on the basis of race, color, or national origin (including limited English proficiency). Related federal and state nondiscrimination laws prohibit discrimination on the basis of age, sex, disability, and additional protected characteristics.

Individuals who believe they have been discriminated against may [file a complaint](#) with the following:

Pioneer Valley Metropolitan Planning Organization MPO Title VI Specialist 60 Congress Street Springfield, MA 01104 Phone 413-781-6045 TTD/TTY (413-781-7168) E-mail: gmroux@pvpc.org	MassDOT Title VI Specialists Office of Diversity and Civil Rights – Title VI Unit 10 Park Plaza, Suite 3800 Boston, MA 02116 Phone: (857) 368-8580 or 7-1-1 for Relay Service Email: MassDOT.CivilRights@state.ma.us
U.S. Department of Transportation Office of Civil Rights 1200 New Jersey Avenue, SE Washington, DC 20590 Website: civilrights.justice.gov/	Federal Transit Administration Office of Civil Rights Attention: Complaint Team East Building, 5th Floor—TCR 1200 New Jersey Avenue, SE Washington, DC 20590 FTA online complaint form

The PVMPO complies with the Governor’s Executive Order 526, section 4 requiring all programs, activities, and services provided, performed, licensed, chartered, funded, regulated, or contracted for by the state shall be conducted without unlawful discrimination based on race, color, age, gender, ethnicity, sexual orientation, gender identity or expression, religion, creed, ancestry, national origin, disability, veteran's status (including Vietnam-era veterans), or background.

English: If this information is needed in another language, please contact the PVPC Title VI Specialist at 413-781-6045.

Portuguese: Caso esta informação seja necessária em outro idioma, favor contar o Especialista em Título VI do PVPC pelo telefone 413-781-6045.

Spanish: Si necesita esta información en otro idioma, por favor contacte al especialista de PVPC del Título VI al 413-781-6045.

Chinese Simplified: (mainland & Singapore): 如果需要使用其它语言了解信息，请联系马萨诸塞州交通部 (PVPC) 《民权法案》第六章专员，电话413-781-6045。

Chinese Traditional: (Hong Kong & Taiwan): 如果需要使用其它語言了解信息，請聯繫馬薩諸塞州交通部 (PVPC) 《民權法案》第六章專員，電話413-781-6045。

Russian: Если Вам необходима данная информация на любом другом языке, пожалуйста, свяжитесь со специалистом по Титулу VI Департамента Транспорта штата Массачусетс (PVPC) по тел:413-781-6045.

Haitian Creole: Si yon moun vle genyen enfòmasyon sa yo nan yon lòt lang, tanpri kontakte Espesyalis PVPC Title VI la nan nimewo 413-781-6045.

Vietnamese: Nếu quý vị cần thông tin này bằng tiếng khác, vui lòng liên hệ Chuyên viên Luật VI của PVPC theo số điện thoại 413-781-6045.

French: Si vous avez besoin d'obtenir une copie de la présente dans une autre langue, veuillez contacter le spécialiste du Titre VI de PVPC en composant le 413-781-6045.

Italian: Se ha bisogno di ricevere queste informazioni in un'altra lingua si prega di contattare lo Specialista PVPC del Titolo VI al numero 413-781-6045.

Khmer: របស់វិស័យនៃការងារសេវាសាងសង់-អគ្គនាយកដ្ឋានសេវាសាងសង់ស្ថាប័ន៖

សមាគមកសិកម្មសេវាសាងសង់ ផ្នែក ក្រសួងសេវាសាងសង់ លេខទូរស័ព្ទ ៤១៣-៧៨១-៦០៤៥

CONTENTS

Study Area	1
Existing Conditions	4
Transportation Infrastructure.....	4
Pavement	4
Curbing, Sidewalks, and Culvert.....	5
Regulatory and Warning Signs	5
Average Daily Traffic.....	6
Speed	6
Peak Hour Volume and Turning Movement Counts.....	9
Congestion and Level of Service	11
Crash Data Analysis.....	12
Signal Warrant Analysis.....	16
Results and Interpretation.....	16
Recommendations to Improve Transportation Conditions	18
1. Short Term Recommendations	18
2. Non-Motorist Accommodations.....	19
3. Establishing a School Zone along Mill Street and Cooper Street	20
4. Traffic Calming Measures.....	20
5. Geometric Improvements or Intersection Control Changes.....	21
Table 1: Average Daily Traffic.....	6
Table 2: Mean Speeds and 85th Percentile Speeds	7
Table 3: LOS Designations	11
Table 4: Existing LOS at the Intersection of Page Boulevard and Bircham Street	12
Table 5: Crash Data Classification	13
Table 6: Detailed Description of Crashes in the Collision Diagram	15
Table 7: Signal Warrant Analysis Results.....	17

Figure 1: Aerial View of the Intersection.....	1
Figure 2: Speed Limit Sign along eastbound approach of Mill Street	2
Figure 3: Cooper Street Approach Median and Lower Mounted Stop Signs.....	3
Figure 4: Holland Drive Approach Stop Line without a Stop Sign	3
Figure 5: Mill Street Pavement and Pavement Markings	4
Figure 6: Culvert in the Southwest corner of the Intersection	5
Figure 7: Cooper Street Median and Post Mounted Signs.....	5
Figure 8: Travel Speed in Percentage of Vehicles Along Eastbound Approach of Mill Street	8
Figure 9: Travel Speed in Percentage of Vehicles Along Westbound Approach of Mill Street	8
Figure 10: Travel Speed in Percentage of Vehicles Along Cooper Street	9
Figure 11: Peak Hour Turning Movement Counts.....	10
Figure 12: Collision Diagram.....	14

Appendix 1: Traffic Volumes

Appendix 2: Traffic Speeds

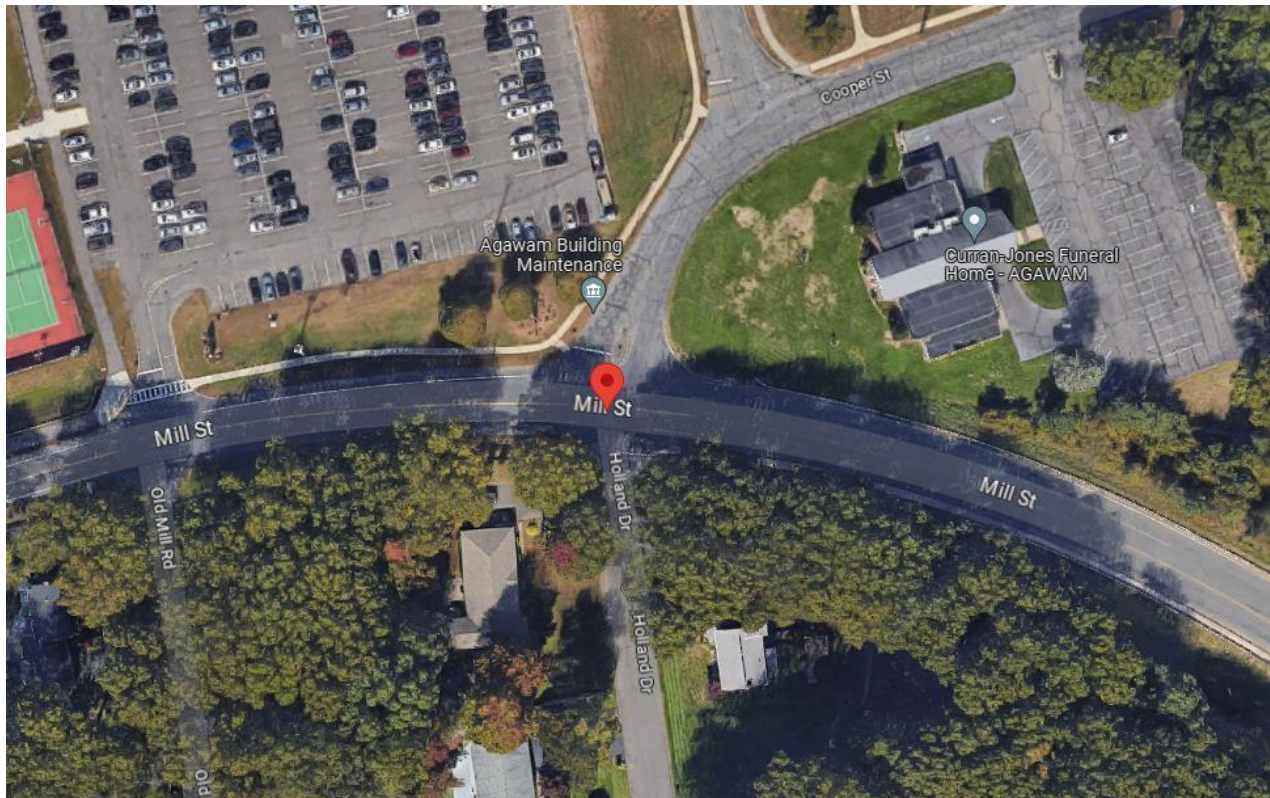
Appendix 3: Turning Movement Counts

Appendix 4: Signal Warrant Analysis Results

Study Area

The intersection of Mill Street and Cooper Street with Holland Drive is a four-way unsignalized intersection located in the vicinity of Agawam High School. The high school is located in the northwest corner of the intersection in a densely populated section of the Town of Agawam. Mill Street and Cooper Street are both federal aid eligible roadways classified as urban minor collectors. Holland Drive is classified as a local residential street.

Figure 1: Aerial View of the Intersection



Source: Google Maps

Mill Street provides a connection between Route 57 and Springfield Street in the Feeding Hills neighborhood of the Town. It is aligned in the east-west direction and provides 2 lanes along both the eastbound and westbound approaches at the intersection. No speed limit signs are currently posted along the westbound approach of Mill Street in the vicinity of the intersection. There is a 35-mph posted speed limit sign for the eastbound approach in the immediate vicinity of the intersection across from the High School driveway. Sidewalks are provided along the northern side of Mill Street. No crosswalks are marked across Mill Street at this intersection.

Cooper Street intersects with Mill Street in the vicinity of a horizontal curve. Exiting traffic from Route 57 travelling westbound on Mill Street may not be aware of the short distance to the

intersection. There is also a downhill vertical grade along the eastbound approach of Mill Street which restricts the sight distance in that direction. The pavement along Mill Street lacks curbing along the southwest corner of the intersection. Pavement markings along Mill Street were noted to be very faded at the time of the field inventory.

Figure 2: Speed Limit Sign along eastbound approach of Mill Street



Cooper Street has a Stop controlled single lane approach which intersects Mill Street from the north. It has one wide lane along the southbound approach of the intersection; however, it operates as a two-lane approach where vehicles can make flared right turns. The Stop signs are mounted lower along both sides of the approach. There is a central raised median located along Cooper Street which separates the receiving lane from the approaching traffic. A 25-mph speed limit sign is posted along Cooper Street in the vicinity of the intersection. The pavement along Cooper Street has granite curbing along the eastern side in the vicinity of the intersection And sidewalks are provided along the western side of Cooper Street.

Holland Drive is a single lane local street which intersects Mill Street from the south. There is a Stop Line but no Stop Sign on the Holland Drive approach to the intersection. Pavement markings are very faded in several areas in the vicinity of the intersection. A culvert for storm drainage is provided along the southern side of the Mill Street near Holland Drive. Pavement edge lines are not marked along any of the approaches in the vicinity of the intersection. Streetlights are located along Mill Street and Cooper Street in the vicinity of the intersection.

Figure 3: Cooper Street Approach Median and Lower Mounted Stop Signs



Figure 4: Holland Drive Approach Stop Line without a Stop Sign



Existing Conditions

This section provides a technical evaluation of the existing transportation conditions at the intersection. It includes a presentation of the data collected, analysis of traffic operations, and a series of observations and conclusions derived from the analysis.

Transportation Infrastructure

Pavement

Overall, the pavement in the vicinity of the intersection is in fair to poor condition with scattered cracks, potholes, and rutting. The Mill Street pavement edge shows significant settling and damage along the southern side where curbing has not been provided. Pavement markings have faded in many areas.

Figure 5: Mill Street Pavement and Pavement Markings



Curbing, Sidewalks, and Culvert

The granite curbing along three corners of the intersection was mostly intact. In the vicinity of the intersection, a sidewalk is located on the northern side of Mill Street and continues around the corner onto Cooper Street. A second sidewalk begins on the southern side of Mill Street east of Holland Drive that continues east past Tennis Road. There are no crosswalks across either of the roads. The culvert under Holland Drive located in the southern part of the intersection was observed to have overgrown vegetation and uncleared debris at the time of the field inventory. This obstructs drainage and creates ponding at the southwest corner of the intersection.

Figure 6: Culvert in the Southwest corner of the Intersection



Regulatory and Warning Signs

Post mounted Stop signs along the Cooper Street approach are lower in height and slightly bent. The median signs for approaching and exiting traffic along Cooper Street are also mounted lower than MUTCD recommendations and were observed to be bent at the time of the field inventory.

Figure 7: Cooper Street Median and Post Mounted Signs



Average Daily Traffic

The Pioneer Valley Planning Commission (PVPC) collected daily traffic counts and speed data along all four approaches of the intersection midweek in October 2022. The volumes obtained from the counts have not been adjusted with seasonal adjustment factors for the purpose of analyses in this report. It is possible that some of the results in the warrant analysis or level of service analysis might change if these factors were applied. Appendix 1 summarizes the traffic counts along each approach separated by direction of travel. Table 1 represents the Average Daily Traffic along each approach separated by direction of travel.

Table 1: Average Daily Traffic

	Approach	Eastbound/Northbound	Westbound/Southbound	Total Both Directions
Mill Street	Eastbound	5,440	6,065	11,505
	Westbound	5,472	4,660	10,132
Cooper Street	Southbound	1,594	1,596	3,190
Holland Drive	Northbound	22	22	44

Speed

Appendix 2 depicts the travel speed of vehicles in the vicinity of the intersection separated by direction of travel. The speed limit along Mill Street in the eastbound direction is 35 mph and along Cooper Street is 25 mph. Currently no Speed Limit signs have been installed for the westbound approach of Mill Street in the vicinity of the intersection. There are no posted school zone signs in the vicinity of the intersection.

The average speed of vehicles travelling southbound along Cooper Street is 35.4 mph with an 85th percentile speed of 40 mph. The 85th percentile speed is the speed at which traffic is travelling at or below. The average speed of vehicles along Mill Street entering the intersection (both approaches combined) is 40.4 mph with an 85th percentile speed of 45.5 mph. Table 2 represents the average speeds and the 85th percentile speeds along these roads broken down by travel direction. These speeds are significantly higher than the posted speed limit.

Table 2: Mean Speeds and 85th Percentile Speeds

			Direction of Travel		
Location of Counter		Posted Speed Limit	Eastbound/ Northbound	Westbound/ Southbound	Both Directions Combined
Mill Street	West of Cooper Street	Average Speed	37 mph	38.5 mph	37.8 mph
		85th Percentile Speed	35 mph	42 mph	43 mph
	East of Cooper Street	Average Speed	43.8 mph	35.5 mph	39.3 mph
		85th Percentile Speed	49 mph	40 mph	46 mph
Cooper Street	North of Mill Street	Average Speed	37.2 mph	35.4 mph	36.3 mph
		85th Percentile Speed	25 mph	42 mph	41 mph
Holland Drive	South of Mill Street	Average Speed	15.8 mph	16.9 mph	16.4 mph
		85th Percentile Speed	23 mph	25 mph	24 mph

Speeds for the study area were further classified into 5 mph ranges to identify the percentage of traffic in each range. This information is presented in Figures 8, 9 and 10. It is observed that more than 75% of vehicles along the eastbound approach of Mill Street and nearly 65% of vehicles along Cooper Street are travelling above the posted speed limits. Similarly, more than 70% of the vehicles are travelling above 35 mph along the westbound approach of Mill Street. Additionally, more than 30% of these speeding vehicles are travelling at more than 40 mph or 5 miles per hour above the posted speed limit range.

Figure 8: Travel Speed in Percentage of Vehicles Along Eastbound Approach of Mill Street

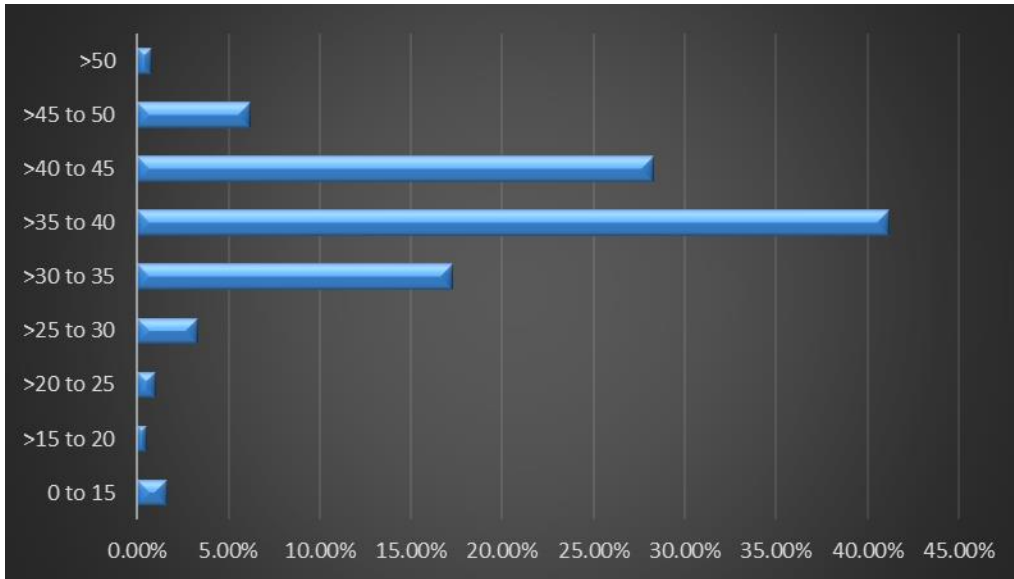


Figure 9: Travel Speed in Percentage of Vehicles Along Westbound Approach of Mill Street

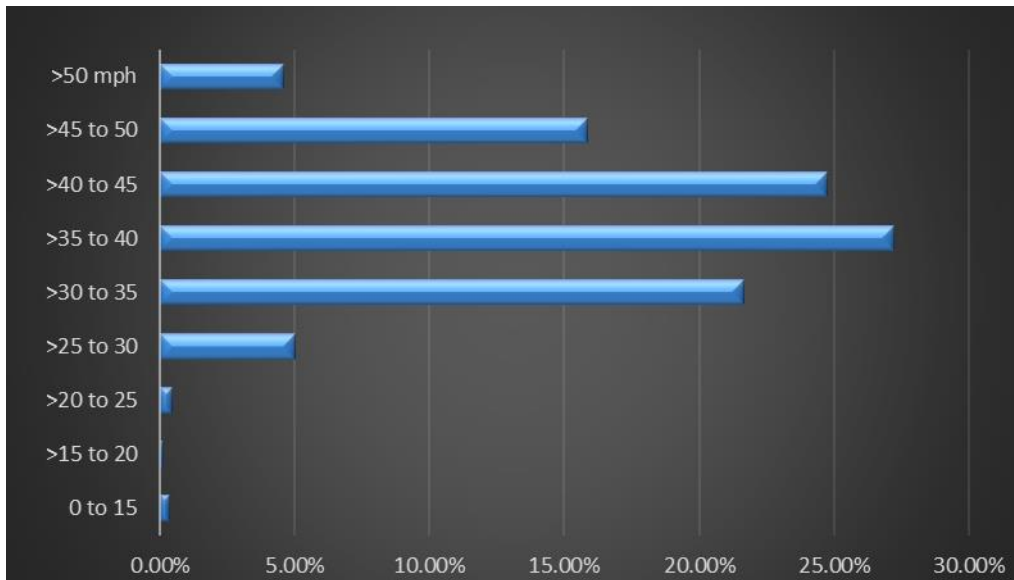
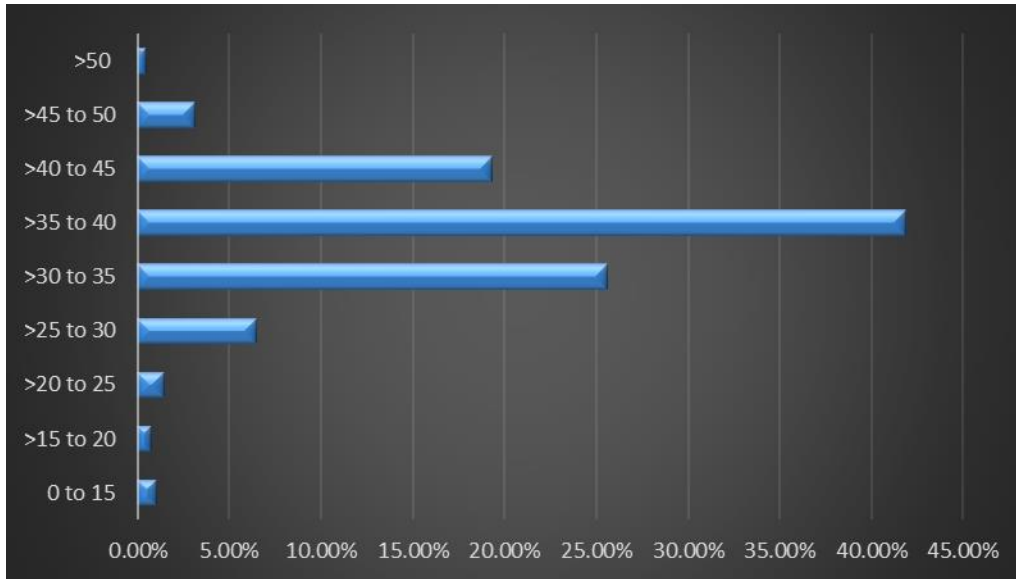


Figure 10: Travel Speed in Percentage of Vehicles Along Cooper Street



Peak Hour Volume and Turning Movement Counts

Turning Movement Counts (TMCs) were conducted for the intersection during the peak commuter periods. The weekday peak commuter periods for most roadways occur during the morning hours of 7:00 AM to 9:00 AM and the afternoon hours of 4:00 PM to 6:00 PM. However, locations in close vicinity to schools are impacted by the arrival and dismissal times of the school. Therefore, the morning TMC's at this location were conducted from 6:30 AM to 9:00 AM, and the afternoon TMC's were conducted from 1:00 pm to 6:00 pm, to identify the peak four consecutive 15-minute periods of traffic through the intersection. These consecutive peak 15-minute periods constitute a location's Peak Hour Volume. The peak hour of traffic volume represents the most critical period for operations and will be the focus for some of the analysis conducted in this study.

The TMC data also identifies the number of heavy vehicles on the roadway. Heavy vehicles include trucks, recreational vehicles, and buses. The percentage of heavy vehicles in the traffic flow is an important component in calculating the serviceability of a corridor or intersection. Trucks impact traffic flow because they occupy more roadway space than passenger cars and have poorer operating capabilities with respect to acceleration, deceleration, and maneuverability. The impact of these factors is utilized as an input to obtain the level of service along the intersection. The TMC data was obtained during weekday peak periods.

Figure 11: Peak Hour Turning Movement Counts

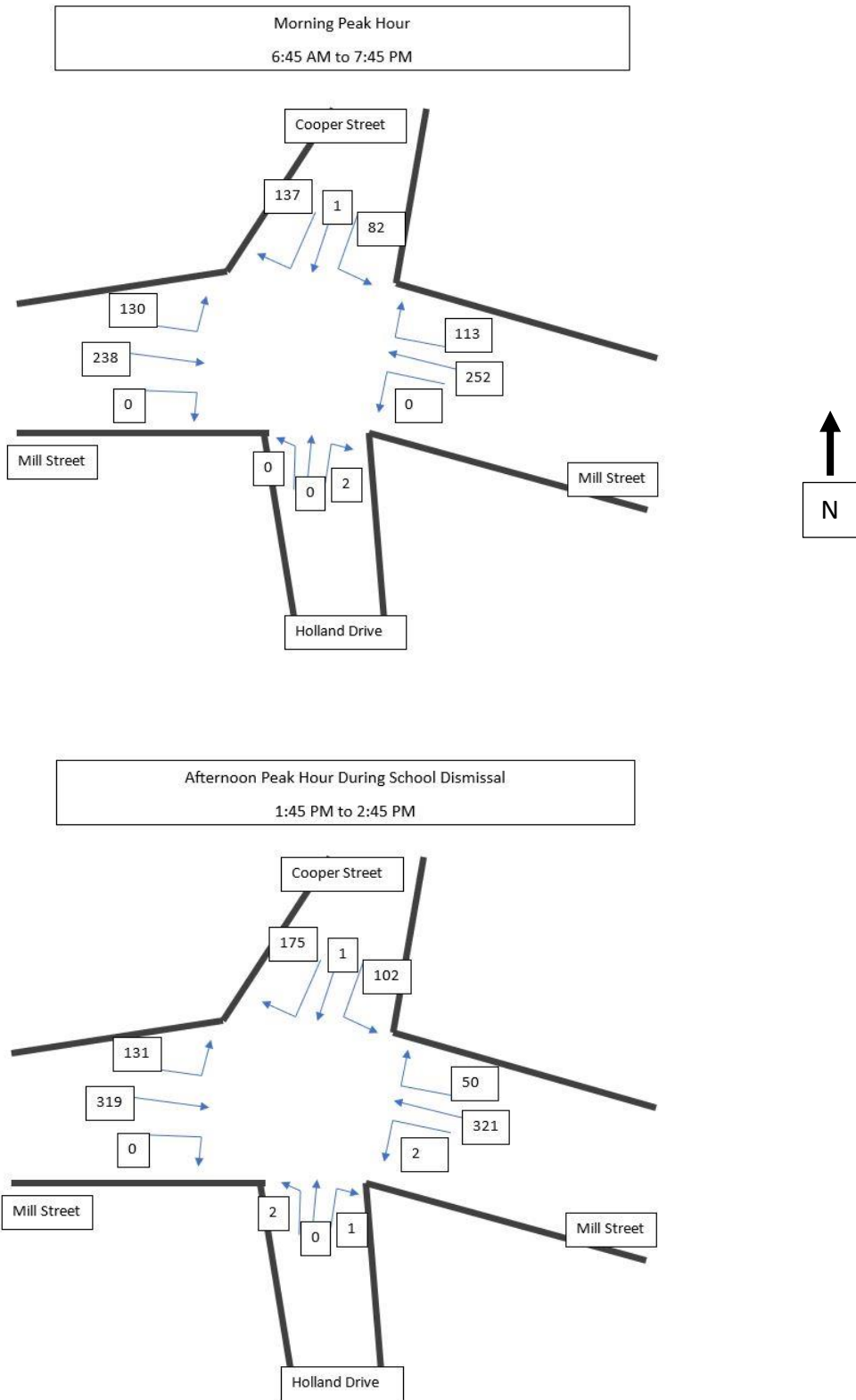


Figure 11 depicts the peak hour intervals and volumes at the intersection. Appendix 3 presents the data and volume by movement along each approach broken into 15-minute intervals.

It can be observed based on the TMC results that the percentage of vehicles turning left and the percentage of vehicles turning right along the Cooper Street approach remains fairly consistent during both peak hours. It is also observed that a significant volume of vehicles makes a left turn into Cooper Street from the eastbound approach of Mill Street.

Congestion and Level of Service

The intersection was examined regarding capacity and delay characteristics to determine the existing Level of Service (LOS). LOS is an indicator of the operating conditions which occur on a roadway under different volumes of traffic and is defined in the Highway Capacity Manual by six levels, 'A' through 'F'. Several operational factors can influence the LOS including geometry, travel speeds, delay, and the number of pedestrians. Depending on the time of day and year, a roadway may operate at varying levels. Level of Service 'A' represents the best operating conditions and is an indicator of ideal travel conditions with vehicles operating at or above posted speed limits with little or no delays. Conversely, LOS 'F', or failure, generally indicates forced flow conditions illustrated by long delays and vehicle queues. Level of Service 'C' indicates a condition of stable flow and is generally considered satisfactory in rural areas. Under LOS 'D' conditions, delays are considerably longer than under LOS 'C' but are considered acceptable in urban areas. At LOS 'E' the roadway begins to operate at unstable flow conditions as the facility is operating at or near its capacity. Table 3 depicts the delay and LOS designations for unsignalized intersections as per the Highway Capacity Manual. Table 4 depicts the results of PVPC's LOS Analysis.

Table 3: LOS Designations

Level of Service	Expected Delay to Minor Street	Average Control Delay (s/veh)
A	Little or no delay	0.0 to 10.0
B	Short Traffic Delays	>10.0 to 15.0
C	Average Traffic Delays	>15.0 to 25.0
D	Long Traffic Delays	>25.0 to 35.0
E	Very Long Delays	>35.0 to 50.0
F	Extreme Delays	>50.0

Table 4: Existing LOS at the Intersection of Page Boulevard and Bircham Street

Street	Approach	Movement	AM Peak Hour		PM Peak Hour	
			Delay in seconds	LOS	Delay in seconds	LOS
Mill Street	Eastbound	Left	8.1	A	8.1	A
		Through	0	A	0	A
	Westbound	Left	8.1	A	8.4	A
		Through	0	A	0	A
Cooper Street	Southbound	Left/Thru/Right	10.4	B	12	B
Holland Drive	Northbound	Left/Thru/Right	9.4	A	20.9	C

Based on the results of the capacity analysis, the intersection operates at a Level of Service A during both the morning and afternoon peak hours. Every movement from all approaches has low delay and the analysis does not indicate significant queuing or congestion at this location during either peak hour.

Crash Data Analysis

Crash data for the last decade (2013-2022) was obtained from MassDOT’s IMPACT crash portal and crash reports were obtained for the past 4 years from the Agawam Police Department. A total of 19 crashes occurred at this intersection over the past decade. Table 5 presents the classification of these crashes as well as circumstances and conditions under which these crashes were reported to have occurred. A majority of the crashes occurred during daylight hours, under clear weather and dry road conditions. No fatalities or non-motorist crashes were reported during the analysis period.

Local Crash Data obtained from the Agawam Police Department was utilized to create a collision diagram for the study area intersection. A collision diagram is a graphical representation of the severity, type, and manner of collision of crashes that occur at a location. Table 6 provides the detailed information about each crash depicted in the collision diagram included in Figure 12. The nine crashes depicted in the collision diagram indicate that all approaches at this location have a similar potential for conflict. Most of the collisions were angle crashes followed by side-swipe crashes and rear-end crashes between vehicles travelling in same direction.

Table 5: Crash Data Classification

Year	Severity	Manner of Collision	Weather	Road	Light
2013	3 Property damage only (none injured)	Angle	Clear	3 Dry	Dark - lighted roadway
		Sideswipe, same direction			Daylight
2014	1 Property damage only (none injured)	1 Angle	1 Clear	1 Dry	1 Daylight
2015	1 Property damage only (none injured)	1 Sideswipe, same direction	1 Clear	1 Dry	1 Daylight
2016	2 Property damage only (none injured)	Angle	1 Clear	1 Dry	1 Dark - lighted roadway
		Sideswipe, same direction	1 Cloudy/Rain	1 Wet	1 Daylight
2017	2 Non-fatal injury	1 Angle	1 Clear	1 Dry	1 Daylight
	2 Property damage only (none injured)	1 Sideswipe, same direction	1 Cloudy/Rain	1 Wet	1
2018	1 Property damage only (none injured)	1 Sideswipe, same direction	1 Clear	1 Dry	1 Daylight
2019	2 Non-fatal injury	1 Angle	1 Clear	2 Dry	2 Dark - lighted roadway
	2 Property damage only (none injured)	1 Sideswipe, opposite directi	1		1 Daylight
2020	4 Property damage only (none injured)	Angle	Clear	4 Dry	Dark - lighted roadway
		Rear-end			Daylight
		Sideswipe, same direction			
		Single vehicle crash			
2021	2 Property damage only (none injured)	Angle	Clear	2 Dry	2 Daylight
		Rear-end			
2022	1 Property damage only (none injured)	1 Angle	1 Clear	1 Dry	1 Daylight
TOTAL	19				

Table 6: Detailed Description of Crashes in the Collision Diagram

No	Date	Time	Day	Manner	Weather	Road	Light	Severity	Description
1	3/6/2019	14:20	Wednesday	Angle	Clear	Dry	Daylight	Property Damage	Vehicle 1 made a Left turn from southbound Cooper Street approach onto Mill Street when it was struck by Vehicle 2 which was travelling straight westbound along Mill Street
2	6/17/2019	21:04	Monday	Angle	Clear	Dry	Daylight	Injury	Vehicle 1 was travelling straight onto Cooper Street from northbound approach of Holland Drive when it was struck by Vehicle 2 which was travelling straight eastbound along Mill Street
3	1/13/2020	11:47	Monday	Rear End	Clear	Dry	Daylight	Property Damage	Vehicle 2 was stopped behind a Truck waiting at eastbound approach of Mill Street to turn left. Vehicle 1 passed both vehicle 2 and the truck while travelling in same direction eastbound. Vehicle 2 pulled out of its lane to pass the truck. Vehicle 2 struck vehicle 1 in the rear when vehicle 1 slowed down
4	1/28/2020	19:14	Tuesday	Single Vehicle Crash	Clear	Dry	Dark-Lighted Roadway	Property Damage	Vehicle 1 was travelling westbound on Mill Street and attempted to make a right turn onto Cooper Street when it struck the sign post for the Library in the northeast corner of the intersection
5	2/14/2020	12:18	Friday	Angle	Clear	Dry	Daylight	Property Damage	Vehicle 1 was travelling eastbound along Mill Street and it slowed down to make a right turn onto Holland Drive when it was struck in the side by Vehicle 2 which was travelling straight along eastbound approach of Mill Street
6	3/8/2020	18:17	Sunday	SideSwipe Same Direction	Clear	Dry	Daylight	Property Damage	Vehicles 1 and 2 were travelling straight along westbound Mill Street. Vehicle 2 turned left from right lane and struck vehicle 1 along the front right side.
7	3/15/2021	14:32	Monday	Angle	Clear	Dry	Daylight	Property Damage	Vehicle 1 was turning left along eastbound approach of Mill Street when it was struck by Vehicle 2 which was travelling straight along westbound approach of Mill Street
8	3/19/2021	18:19	Friday	Rear End	Clear	Dry	Daylight	Property Damage	Vehicle 1 slowed down to stop along eastbound approach of Mill Street to turn left when it was struck by Vehicle 2 in the rear
9	1/28/2022	6:54	Friday	Angle	Clear	Dry	Daylight	Property Damage	Vehicle 1 was travelling westbound along Mill Street and Vehicle 2 was travelling southbound along Cooper Street and made a right turn failing to yield to vehicle 1

Signal Warrant Analysis

The intersection of Mill Street, Cooper Street and Holland Drive was analyzed to determine whether a traffic signal would be warranted and would improve transportation conditions at this location. The Manual on Uniform Traffic Control Devices (MUTCD) identifies eight different warrants to evaluate if an intersection meets the minimum requirements for signalization. One or more warrants must be satisfied to justify the installation of a traffic signal; however, engineering judgment ultimately dictates if an intersection warrants the installation of a signal. The installation of a traffic signal must also improve the safety and operation of the location under study. Table 7 presents the results of the signal warrant analysis (SWA). Of the eight total warrants for the installation of a traffic signal, Warrant 1 – Eight Hour Vehicular Volume is generally considered the most important as it requires minimum volumes to be met on both the major and minor streets for at least eight hours. Warrant 2 – Four Hour Vehicular Volume and Warrant 3 – Peak Hour Volume also require minimum volumes to be met but over shorter timeframes. Warrant 7 – Crash Experience requires 80% of the volume requirements of Warrant 1 to be satisfied and at least 5 crashes of a type correctable through traffic signalization to have occurred over the last year. This warrant also requires that less restrictive remedies such as improved signage and pavement markings be tried and have failed to reduce crashes before a signal can be installed.

Results and Interpretation

The posted speed limits along the approaches of this intersection are less than 40 mph; however, the 85th percentile speeds along three of its approaches are greater than 40 mph. When the speed of vehicles along the major street increases beyond 40 mph, the minimum volume requirement thresholds are decreased during the analysis. As a result, the outcome changes compared to the outcome of the analysis conducted utilizing lower/posted speed limits. This intersection meets the volume requirements for the first three warrants when the volume thresholds are decreased using current 85th percentile speeds. Appendix 4 summarizes the result of the warrant analysis conducted utilizing the Highway Capacity Software (HCS2023).

The MUTCD guidelines specify that in addition to meeting a Signal Warrant, engineering judgement and justification of proper measures to improve existing traffic conditions should be considered in making decisions regarding new signal installations. Alternate measures to mitigate traffic problems at the intersection should be considered simultaneously while examining the potential effectiveness of the signal in alleviating current issues. Under the current circumstances, it is recommended that the Town of Agawam consider other alternative measures to improve conditions and lower travel speeds at this location before considering a traffic signal.

Table 7: Signal Warrant Analysis Results

	Description	Result (Posted Speed Limit)	Result (85 th Percentile Speed)
Warrant 1	Eight – Hour Vehicular Volume	Not Satisfied	Satisfied
Warrant 2	Four- Hour Volume	Not Satisfied	Satisfied
Warrant 3	Peak Hour Volume	Not Satisfied	Satisfied
Warrant 4	Pedestrian Volume	N/A	N/A
Warrant 5	School Crossing	N/A	N/A
Warrant 6	Coordinated Signal System	N/A	N/A
Warrant 7	Crash Experience	Not Satisfied	Not Satisfied
Warrant 8	Road Network	N/A	N/A
Warrant 9	Intersection Near a Grade Crossing	N/A	N/A
N/A – Not Applied			

The installation of a signal might potentially decrease delay and queueing at this intersection during the two peak hours that coincide with the school arrival and dismissal times. However, there is a possibility of achieving improved operations throughout the day by implementing measures to reduce traffic speeds. Reducing the speed through traffic calming measures would also result in changing the results of the signal warrant analysis. The investment in long term and expensive traffic signal equipment and related changes may not be justified when compared to the cost to implement other traffic calming measures and alternate solutions to reduce speed and improve mobility.

Traffic Safety point of view a signal is not warranted under current circumstances because of low number of crashes at this location. The installation of a signal could assist in further reducing the current number of angle collisions at the intersection but there is a possibility that rear-end collisions could increase due to existing high travel speeds and the vertical grade along Mill Street.

It is also worthy to note that this analysis is based upon actual, unadjusted traffic volumes collected at the intersection. Traffic volumes tend to fluctuate by day of the week and time of the year. Information on seasonal traffic volume fluctuation from MassDOT shows that traffic volumes in the month of October are typically 6% higher than average conditions. PVPC chose not to adjust the traffic data collected for this study as the regional travel patterns and traffic volumes were heavily impacted by the Covid-19 Pandemic. Traffic Volumes and conditions have still not returned to the pre-pandemic levels and additional data is necessary to understand the true long-term impact of the pandemic on regional traffic.

Recommendations to Improve Transportation Conditions

In addition to regular infrastructure improvements and maintenance in the vicinity of this location, potential traffic calming measures can help to reduce travel speeds and improve traffic operations. Appropriate regulatory measures can also help to better guide traffic flow and reduce congestion during the peak hours. Additionally, Mill Street segment east of this intersection is under MassDOT's jurisdiction. Therefore, The Town of Agawam and MassDOT have to work in cooperation to advance infrastructure improvements at this location. The following short and long recommendations are presented for the Town and MassDOT. The short-term recommendations are improvements that can be implemented within next several months.

1. Short Term Recommendations

- (i) The pavement markings for this intersection are faded at several locations. The lane demarcation lines along both Mill Street approaches are faded and lack a pavement edge line. PVPC staff observed that vehicles are confusing the right travel lane in the eastbound direction as a wide shoulder or a break down lane. PVPC also observed vehicles parked in the right travel lane along the eastbound approach of Mill Street. The right turn only pavement markings for the westbound approach of Mill Street are not clearly visible. It is recommended that the Town consider improving the existing conditions by repainting pavement markings with retro reflective paint to ensure proper visibility and compliance.
- (ii) The Town could also consider painting speed limit markings within the travel lanes along Mill Street and Cooper Street to improve compliance with the posted speed limits.
- (iii) It is recommended that pavement edge lines be installed along Mill Street and Cooper Street to enhance the visibility of the lanes and reduce vehicle travel speeds. Guidance from the Federal Highway Administration indicates that edge lines can be up to 6 inches wide.
- (iv) Installing appropriate curbing along the southwest corner of the intersection and redesigning the path for storm water drainage is recommended to prevent erosion and prevent further damage to the pavement in this area. At a minimum, it is recommended the Town repair existing pavement damage in this area as soon as possible.
- (v) It is recommended that a Stop sign be installed for the northbound approach of Holland Drive.
- (vi) Currently no Speed Limit signs have been installed for the westbound approach of Mill Street in the vicinity of the intersection. It is recommended that the Town

review the speed limit regulation for this section of Mill Street and coordinate with MassDOT to identify where a new speed limit sign should be located.

- (vii) No “Intersection Ahead” warning signs were observed for the westbound approach of Mill Street. This warning sign is recommended to notify traffic, particularly traffic exiting Route 57, of the possibility of exiting traffic from the intersection.
- (viii) It is recommended that both Stop signs and the traffic directing signs along the median on the southbound approach of Cooper Street be installed at an appropriate height according to MUTCD guidelines.
- (ix) The culvert located in the south of the intersection is partially covered with overgrown vegetation and debris. It is recommended that the Town clear the path of storm water to prevent ponding.

2. Non-Motorist Accommodations

- (i) Currently there are sidewalks located along the northern side of Mill Street to the west of the intersection and along the southern side of Mill Street to the east of the intersection. On Cooper Street, the sidewalk is located along the western side of the street adjacent to the school parking lot. There are no crosswalks connecting the sidewalks on Mill Street. The presence of a culvert on the southern side of the intersection restricts the potential for construction of a sidewalk along that side of the road. The lack of crosswalks across Mill Street and Cooper Street and absence of sidewalks on one side of the street creates numerous connectivity issues for bicycles and pedestrians. It is observed that because of the horizontal curve and the vertical grade along Mill Street there is a visibility issue for motorists at this intersection. The Town of Agawam should consider undertaking an engineering study to examine the possibility of connecting the sidewalks along Mill Street and installing a new sidewalk on the eastern side of Cooper Street. Similarly, the Town should also consider evaluating the possibilities of installing a crosswalk across Cooper Street at this intersection and of installing a Rectangular Rapid Flashing Beacon along with a crosswalk across Mill Street in the vicinity of this location.
- (ii) There are no bike lanes or shoulders in the vicinity of this intersection along either of the four approaches. There is an informal side path adjacent to the athletic field west of the High School. The State of Massachusetts has promoted the Safe Routes to School program to increase safe biking and walking among elementary, middle, and high school students by using a collaborative, community-focused approach. The Town should consider working with MassDOT under this initiative

to determine the potential for installation of bike lanes along this intersection that connect the High School with other residential neighborhoods in the vicinity.

3. Establishing a School Zone along Mill Street and Cooper Street

Currently there are no posted school zone signs along either Mill Street or Cooper Street. There is documented evidence of speeding in this area by more than 70% of vehicles. A high volume of speeding vehicles and lack of adequate non-motorist accommodations create the potential for traffic safety issues in this area. Under section 7A.05 of the Massachusetts Amendments to MUTCD, a school zone can be established along the roadway if the school and the community show the need and provide a plan depicting the routes that the students utilize for walking/biking. The Town of Agawam should work in collaboration with the High School and MassDOT to request an official School Zone. This would also serve to help reduce travel speeds to the 25-mph range during school hours.

4. Traffic Calming Measures

- (i) Traffic Speed Regulation/Enforcement - The 85th percentile speeds of vehicles along Mill Street and Cooper Street are exceeding the posted speed limits. More than 70% of vehicles were recorded as travelling above the posted speed limit. Additionally, the westbound approach of Mill Street does not have a Speed Limit sign in the vicinity of the intersection. It is recommended that the Town review the speed limit regulation and coordinate with MassDOT to identify where a new speed limit sign should be located. Enhanced enforcement of the existing speed limit will also help to increase awareness and compliance of the posted speeds.
- (ii) Advance Warning and Regulatory Signs - Installation of additional high visibility Speed Limit signs accompanied by appropriate advance warning signs of 'Approaching Intersection' could help in alerting drivers. The MUTCD provides design guidelines for high visibility regulatory signs (e.g., solar flashing LED signs) to ensure compliance along higher speed roadways.
- (iii) Speed Feed Back Signs - Mobile Speed feedback signs are most effective in regulating speed limits along transportation corridors. Placing these signs in both directions on Mill Street and along Cooper Street could assist in reducing the speed of vehicles and decreasing the potential for traffic conflicts.
- (iv) Enhanced pavement markings and signs - Additional pavement markings and well maintained highly visible lane markings play a large role in reducing traffic speeds along roadways. These measures can also help focus drivers' attention on their speed and make them aware to comply with existing regulations. Similarly, wider roadway lane lines and edge lines can help to keep drivers in the proper travel lane.

5. Geometric Improvements or Intersection Control Changes

Roundabout - As a long-term improvement measure the Town of Agawam could consider an engineering study to determine whether this intersection would benefit from the installation of a Roundabout. Currently the intersection is calculated to operate at level of service 'A'. A roundabout can help decrease travel speeds but does require a level surface with minimum grade and adequate right of way. The eastbound approach of Mill Street currently has a downward grade in the vicinity of this intersection. This measure should be explored if there is adequate local support and if the engineering study warrants the installation of a roundabout.

APPENDIX 1

Pioneer Valley Planning Commision

60 Congress Street
Springfield, MA 01104
(413) 781-6045 www.pvpc.org

Location : Agawam
Operator : AK, GK
Counter # : 2078
Road Class : U6

Site Code: 10047
Station ID:
Mill St
W/O Cooper St

10/17/2022	10/17/2022		10/18/2022		10/19/2022		10/20/2022		10/21/2022		Weekday Average		10/22/2022		10/23/2022	
Time	EB	WB	EB	WB	EB	WB	EB	WB	EB	WB	EB	WB	EB	WB	EB	WB
12:00 AM	*	*	*	*	*	*	15	23	20	26	18	24	*	*	*	*
1:00	*	*	*	*	*	*	11	22	11	16	11	19	*	*	*	*
2:00	*	*	*	*	*	*	11	10	10	12	10	11	*	*	*	*
3:00	*	*	*	*	*	*	13	11	17	12	15	12	*	*	*	*
4:00	*	*	*	*	*	*	29	14	30	22	30	18	*	*	*	*
5:00	*	*	*	*	*	*	107	47	101	41	104	44	*	*	*	*
6:00	*	*	*	*	*	*	358	135	302	122	330	128	*	*	*	*
7:00	*	*	*	*	*	*	448	339	435	357	442	348	*	*	*	*
8:00	*	*	*	*	*	*	400	296	406	284	403	290	*	*	*	*
9:00	*	*	*	*	193	198	314	308	291	296	266	267	*	*	*	*
10:00	*	*	*	*	332	295	336	361	294	322	321	326	*	*	*	*
11:00	*	*	*	*	304	339	367	435	313	381	328	385	*	*	*	*
12:00 PM	*	*	*	*	290	339	378	438	343	379	337	385	*	*	*	*
1:00	*	*	*	*	340	426	345	433	37	36	241	298	*	*	*	*
2:00	*	*	*	*	427	523	411	462	*	*	419	492	*	*	*	*
3:00	*	*	*	*	394	562	370	565	*	*	382	564	*	*	*	*
4:00	*	*	*	*	406	591	432	610	*	*	419	600	*	*	*	*
5:00	*	*	*	*	393	546	421	559	*	*	407	552	*	*	*	*
6:00	*	*	*	*	318	390	344	440	*	*	331	415	*	*	*	*
7:00	*	*	*	*	224	297	218	297	*	*	221	297	*	*	*	*
8:00	*	*	*	*	151	271	186	270	*	*	168	270	*	*	*	*
9:00	*	*	*	*	110	149	136	194	*	*	123	172	*	*	*	*
10:00	*	*	*	*	66	83	89	104	*	*	78	94	*	*	*	*
11:00	*	*	*	*	36	49	35	59	*	*	36	54	*	*	*	*
Total	0	0	0	0	3984	5058	5774	6432	2610	2306	5440	6065	0	0	0	0
Day	0		0		9042		12206		4916		11505		0		0	
AM Peak					10:00	11:00	7:00	11:00	7:00	11:00	7:00	11:00				
Volume					332	339	448	435	435	381	442	385				
PM Peak					2:00	4:00	4:00	4:00	12:00 PM	12:00 PM	2:00	4:00				
Volume					427	591	432	610	343	379	419	600				
Comb Total	0		0		9042		12206		4916		11505		0		0	
ADT	ADT: 11,505		AADT: 11,505													

Pioneer Valley Planning Commission

60 Congress Street
Springfield, MA 01104
(413) 781-6045 www.pvpc.org

Location : Agawam
Operator : AK, GK
Counter # : 2383
Road Class : U6

Site Code: 10048
Station ID:
Mill St
E/O Cooper St

	10/17/2022		10/18/2022		10/19/2022		10/20/2022		10/21/2022		Weekday Average		10/22/2022		10/23/2022	
Time	WB	EB	WB	EB	WB	EB	WB	EB	WB	EB	WB	EB	WB	EB	WB	EB
12:00 AM	*	*	*	*	*	*	19	8	25	13	22	10	*	*	*	*
1:00	*	*	*	*	*	*	15	7	12	11	14	9	*	*	*	*
2:00	*	*	*	*	*	*	6	15	8	10	7	12	*	*	*	*
3:00	*	*	*	*	*	*	14	14	14	20	14	17	*	*	*	*
4:00	*	*	*	*	*	*	21	65	25	58	23	62	*	*	*	*
5:00	*	*	*	*	*	*	92	163	72	137	82	150	*	*	*	*
6:00	*	*	*	*	*	*	362	311	359	274	360	292	*	*	*	*
7:00	*	*	*	*	*	*	254	363	259	335	256	349	*	*	*	*
8:00	*	*	*	*	253	242	280	270	263	295	265	269	*	*	*	*
9:00	*	*	*	*	237	263	260	254	248	260	248	259	*	*	*	*
10:00	*	*	*	*	264	274	352	373	323	263	313	303	*	*	*	*
11:00	*	*	*	*	290	248	355	312	332	277	326	279	*	*	*	*
12:00 PM	*	*	*	*	309	245	389	313	93	113	264	224	*	*	*	*
1:00	*	*	*	*	370	372	392	343	*	*	381	358	*	*	*	*
2:00	*	*	*	*	430	368	445	328	*	*	438	348	*	*	*	*
3:00	*	*	*	*	543	341	526	293	*	*	534	317	*	*	*	*
4:00	*	*	*	*	538	321	597	354	*	*	568	338	*	*	*	*
5:00	*	*	*	*	431	300	425	327	*	*	428	314	*	*	*	*
6:00	*	*	*	*	305	231	358	244	*	*	332	238	*	*	*	*
7:00	*	*	*	*	199	176	245	165	*	*	222	170	*	*	*	*
8:00	*	*	*	*	171	133	163	246	*	*	167	190	*	*	*	*
9:00	*	*	*	*	107	72	118	95	*	*	112	84	*	*	*	*
10:00	*	*	*	*	57	44	62	48	*	*	60	46	*	*	*	*
11:00	*	*	*	*	35	23	37	20	*	*	36	22	*	*	*	*
Total	0	0	0	0	4539	3653	5787	4931	2033	2066	5472	4660	0	0	0	0
Day	0	0	0	0	8192	8192	10718	10718	4099	4099	10132	10132	0	0	0	0
AM Peak					11:00	10:00	6:00	10:00	6:00	7:00	6:00	7:00				
Volume					290	274	362	373	359	335	360	349				
PM Peak					3:00	1:00	4:00	4:00	12:00 PM	12:00 PM	4:00	1:00				
Volume					543	372	597	354	93	113	568	358				
Comb Total	0	0	0	0	8192	8192	10718	10718	4099	4099	10132	10132	0	0	0	0
ADT	ADT: 10,130	ADT: 10,130	ADT: 10,130	ADT: 10,130												

Pioneer Valley Planning Commision

60 Congress Street
Springfield, MA 01104
(413) 781-6045 www.pvpc.org

Location : Agawam
Operator : AK, GK
Counter # : 2073
Road Class : U6

Site Code: 10049
Station ID:
Cooper St
N/O Mill St

10/17/2022	10/17/2022		10/18/2022		10/19/2022		10/20/2022		10/21/2022		Weekday Average		10/22/2022		10/23/2022	
Time	NB	SB	NB	SB	NB	SB	NB	SB	NB	SB	NB	SB	NB	SB	NB	SB
12:00 AM	*	*	*	*	*	*	3	2	4	1	4	2	*	*	*	*
1:00	*	*	*	*	*	*	5	2	2	1	4	2	*	*	*	*
2:00	*	*	*	*	*	*	2	0	3	0	2	0	*	*	*	*
3:00	*	*	*	*	*	*	1	1	1	3	1	2	*	*	*	*
4:00	*	*	*	*	*	*	4	6	5	3	4	4	*	*	*	*
5:00	*	*	*	*	*	*	9	12	16	13	12	12	*	*	*	*
6:00	*	*	*	*	*	*	47	87	54	72	50	80	*	*	*	*
7:00	*	*	*	*	*	*	121	114	119	114	120	114	*	*	*	*
8:00	*	*	*	*	*	*	100	77	80	83	90	80	*	*	*	*
9:00	*	*	*	*	*	*	73	72	84	89	78	80	*	*	*	*
10:00	*	*	*	*	82	76	130	108	80	90	97	91	*	*	*	*
11:00	*	*	*	*	83	107	135	122	92	106	103	112	*	*	*	*
12:00 PM	*	*	*	*	94	95	111	112	104	100	103	102	*	*	*	*
1:00	*	*	*	*	146	148	104	116	34	29	95	98	*	*	*	*
2:00	*	*	*	*	156	138	139	144	*	*	148	141	*	*	*	*
3:00	*	*	*	*	155	160	116	128	*	*	136	144	*	*	*	*
4:00	*	*	*	*	120	141	132	162	*	*	126	152	*	*	*	*
5:00	*	*	*	*	127	127	145	129	*	*	136	128	*	*	*	*
6:00	*	*	*	*	109	87	93	110	*	*	101	98	*	*	*	*
7:00	*	*	*	*	71	68	59	66	*	*	65	67	*	*	*	*
8:00	*	*	*	*	51	47	62	45	*	*	56	46	*	*	*	*
9:00	*	*	*	*	30	21	43	25	*	*	36	23	*	*	*	*
10:00	*	*	*	*	13	11	21	12	*	*	17	12	*	*	*	*
11:00	*	*	*	*	8	5	11	8	*	*	10	6	*	*	*	*
Total	0	0	0	0	1245	1231	1666	1660	678	704	1594	1596	0	0	0	0
Day	0	0	0	0	2476	2476	3326	3326	1382	1382	3190	3190	0	0	0	0
AM Peak					11:00	11:00	11:00	11:00	7:00	7:00	7:00	7:00				
Volume					83	107	135	122	119	114	120	114				
PM Peak					2:00	3:00	5:00	4:00	12:00 PM	12:00 PM	2:00	4:00				
Volume					156	160	145	162	104	100	148	152				
Comb Total	0	0	0	0	2476	2476	3326	3326	1382	1382	3190	3190	0	0	0	0
ADT	ADT: 3,191	ADT: 3,191	ADT: 3,191	ADT: 3,191	ADT: 3,191	ADT: 3,191	ADT: 3,191	ADT: 3,191	ADT: 3,191	ADT: 3,191	ADT: 3,191	ADT: 3,191	ADT: 3,191	ADT: 3,191	ADT: 3,191	ADT: 3,191

Pioneer Valley Planning Commision

60 Congress Street
Springfield, MA 01104
(413) 781-6045 www.pvpc.org

Location : Agawam
Operator : AK, GK
Counter # : 2075
Road Class : none

Site Code: 10050
Station ID:
Holland Dr
S/O Mill St.

	10/17/2022		10/18/2022		10/19/2022		10/20/2022		10/21/2022		Weekday Average		10/22/2022		10/23/2022	
Time	SB	NB	SB	NB	SB	NB	SB	NB	SB	NB	SB	NB	SB	NB	SB	NB
12:00 AM	*	*	*	*	*	*	0	0	0	0	0	0	*	*	*	*
1:00	*	*	*	*	*	*	0	1	0	0	0	0	*	*	*	*
2:00	*	*	*	*	*	*	1	0	1	0	1	0	*	*	*	*
3:00	*	*	*	*	*	*	0	0	0	0	0	0	*	*	*	*
4:00	*	*	*	*	*	*	0	0	0	0	0	0	*	*	*	*
5:00	*	*	*	*	*	*	0	0	0	0	0	0	*	*	*	*
6:00	*	*	*	*	*	*	0	0	0	0	0	0	*	*	*	*
7:00	*	*	*	*	*	*	0	2	0	3	0	2	*	*	*	*
8:00	*	*	*	*	*	*	2	0	2	0	2	0	*	*	*	*
9:00	*	*	*	*	*	*	0	2	2	4	1	3	*	*	*	*
10:00	*	*	*	*	2	5	3	5	0	3	2	4	*	*	*	*
11:00	*	*	*	*	0	2	0	2	1	2	0	2	*	*	*	*
12:00 PM	*	*	*	*	3	1	2	2	3	1	3	1	*	*	*	*
1:00	*	*	*	*	2	3	3	4	1	1	2	3	*	*	*	*
2:00	*	*	*	*	2	1	4	1	*	*	3	1	*	*	*	*
3:00	*	*	*	*	4	3	1	1	*	*	2	2	*	*	*	*
4:00	*	*	*	*	0	0	3	0	*	*	2	0	*	*	*	*
5:00	*	*	*	*	5	1	3	3	*	*	4	2	*	*	*	*
6:00	*	*	*	*	1	2	0	1	*	*	0	2	*	*	*	*
7:00	*	*	*	*	1	0	0	0	*	*	0	0	*	*	*	*
8:00	*	*	*	*	0	0	1	0	*	*	0	0	*	*	*	*
9:00	*	*	*	*	0	0	0	0	*	*	0	0	*	*	*	*
10:00	*	*	*	*	0	0	0	0	*	*	0	0	*	*	*	*
11:00	*	*	*	*	0	0	1	0	*	*	0	0	*	*	*	*
Total	0	0	0	0	20	18	24	24	10	14	22	22	0	0	0	0
Day	0	0	0	0	38	18	48	24	24	44	22	22	0	0	0	0
AM Peak					10:00	10:00	10:00	10:00	8:00	9:00	8:00	10:00				
Volume					2	5	3	5	2	4	2	4				
PM Peak					5:00	1:00	2:00	1:00	12:00 PM	12:00 PM	5:00	1:00				
Volume					5	3	4	4	3	1	4	3				
Comb Total	0	0	0	0	38	18	48	24	24	44	22	22	0	0	0	0
ADT		ADT: 46		AADT: 46												

APPENDIX 2

Pioneer Valley Planning Commission

60 Congress Street
Springfield, MA 01104
(413) 781-6045 www.pvpc.org

Location : Agawam
Operator : AK, GK
Counter # : 2078
Road Class : U6
Direction: EB

Site Code: 10047
Station ID:
Mill St
W/O Cooper St

10/19/2022	> 15 - 20	> 20 - 25	> 25 - 30	> 30 - 35	> 35 - 40	> 40 - 45	> 45 - 50	> 50 - 55	> 55 - 60	> 60 - 65	> 65 - 70	> 70 MPH	Total
Time	0 - 15 MPH	MPH	MPH	MPH	MPH	MPH	MPH	MPH	MPH	MPH	MPH	MPH	
12:00 AM	*	*	*	*	*	*	*	*	*	*	*	*	0
1:00	*	*	*	*	*	*	*	*	*	*	*	*	0
2:00	*	*	*	*	*	*	*	*	*	*	*	*	0
3:00	*	*	*	*	*	*	*	*	*	*	*	*	0
4:00	*	*	*	*	*	*	*	*	*	*	*	*	0
5:00	*	*	*	*	*	*	*	*	*	*	*	*	0
6:00	*	*	*	*	*	*	*	*	*	*	*	*	0
7:00	*	*	*	*	*	*	*	*	*	*	*	*	0
8:00	*	*	*	*	*	*	*	*	*	*	*	*	0
9:00	1	1	4	19	49	65	48	6	0	0	0	0	193
10:00	4	0	2	9	54	168	81	14	0	0	0	0	332
11:00	4	0	1	4	48	162	74	10	1	0	0	0	304
12:00 PM	4	0	0	6	62	132	75	10	1	0	0	0	290
1:00	1	2	8	17	87	153	65	6	1	0	0	0	340
2:00	9	3	7	18	128	172	77	13	0	0	0	0	427
3:00	1	0	1	15	109	196	64	8	0	0	0	0	394
4:00	2	3	5	8	59	186	127	16	0	0	0	0	406
5:00	0	0	1	4	81	205	93	7	1	0	0	1	393
6:00	2	0	1	3	78	172	53	8	1	0	0	0	318
7:00	2	0	0	4	53	107	52	6	0	0	0	0	224
8:00	0	0	1	6	26	81	27	8	1	1	0	0	151
9:00	1	0	0	4	24	44	25	11	1	0	0	0	110
10:00	0	0	0	1	9	20	24	8	3	1	0	0	66
11:00	0	0	1	0	4	17	11	3	0	0	0	0	36
Total	31	9	32	118	871	1880	896	134	10	2	0	1	3984

Pioneer Valley Planning Commission

60 Congress Street
Springfield, MA 01104
(413) 781-6045 www.pvpc.org

Location : Agawam
Operator : AK, GK
Counter # : 2078
Road Class : U6
Direction: EB

Site Code: 10047
Station ID:
Mill St
W/O Cooper St

10/20/2022	> 15 - 20	> 20 - 25	> 25 - 30	> 30 - 35	> 35 - 40	> 40 - 45	> 45 - 50	> 50 - 55	> 55 - 60	> 60 - 65	> 65 - 70	> 70 MPH	Total
Time	0 - 15 MPH	MPH	MPH	MPH	MPH	MPH	MPH	MPH	MPH	MPH	MPH	MPH	
12:00 AM	0	0	0	2	3	3	4	2	0	0	1	0	15
1:00	0	0	0	0	5	4	2	0	0	0	0	0	11
2:00	0	0	0	0	2	6	2	1	0	0	0	0	11
3:00	0	0	0	1	2	5	2	2	1	0	0	0	13
4:00	0	0	0	0	8	8	10	2	1	0	0	0	29
5:00	0	0	0	0	13	49	37	6	1	1	0	0	107
6:00	1	0	5	27	107	154	56	8	0	0	0	0	358
7:00	74	14	14	23	71	135	110	7	0	0	0	0	448
8:00	0	0	0	2	46	186	145	20	1	0	0	0	400
9:00	0	0	0	3	38	148	99	26	0	0	0	0	314
10:00	5	3	3	11	65	152	81	13	3	0	0	0	336
11:00	5	3	4	13	72	157	96	15	1	1	0	0	367
12:00 PM	5	0	1	5	83	177	83	23	0	1	0	0	378
1:00	7	3	2	8	58	173	76	14	4	0	0	0	345
2:00	9	3	1	12	75	189	101	21	0	0	0	0	411
3:00	1	0	1	8	64	164	114	16	1	0	0	0	370
4:00	12	4	6	24	93	183	94	14	1	0	0	0	432
5:00	2	2	4	22	86	197	93	13	2	0	0	0	421
6:00	4	3	14	48	115	127	29	4	0	0	0	0	344
7:00	2	1	11	20	70	80	30	3	1	0	0	0	218
8:00	10	4	6	20	47	72	24	3	0	0	0	0	186
9:00	5	2	6	2	20	52	41	6	2	0	0	0	136
10:00	0	0	0	3	12	41	28	5	0	0	0	0	89
11:00	0	0	0	0	6	17	10	2	0	0	0	0	35
Total	142	42	78	254	1161	2479	1367	226	19	3	1	0	5774

Pioneer Valley Planning Commission

60 Congress Street
Springfield, MA 01104
(413) 781-6045 www.pvpc.org

Location : Agawam
Operator : AK, GK
Counter # : 2078
Road Class : U6
Direction: EB

Site Code: 10047
Station ID:
Mill St
W/O Cooper St

10/21/2022	> 15 - 20	> 20 - 25	> 25 - 30	> 30 - 35	> 35 - 40	> 40 - 45	> 45 - 50	> 50 - 55	> 55 - 60	> 60 - 65	> 65 - 70	> 70 MPH	Total
Time	0 - 15 MPH	MPH	MPH	MPH	MPH	MPH	MPH	MPH	MPH	MPH	MPH	MPH	
12:00 AM	0	1	0	1	6	3	5	1	0	1	1	0	20
1:00	0	0	0	0	3	5	2	0	0	1	0	0	11
2:00	0	0	0	0	1	6	2	1	0	0	0	0	10
3:00	0	0	0	0	3	6	5	3	0	0	0	0	17
4:00	0	0	0	0	6	9	9	4	2	0	0	0	30
5:00	0	1	0	1	14	33	36	12	4	0	0	0	101
6:00	0	1	6	22	85	112	60	15	1	0	0	0	302
7:00	98	16	18	18	40	123	107	14	1	0	0	0	435
8:00	0	2	0	8	43	148	165	36	4	0	0	0	406
9:00	2	1	0	3	21	128	119	16	1	0	0	0	291
10:00	1	0	3	5	32	145	91	15	1	1	0	0	294
11:00	2	0	0	14	46	136	93	21	1	0	0	0	313
12:00 PM	2	0	4	5	53	157	105	15	2	0	0	0	343
1:00	1	1	0	1	6	16	11	1	0	0	0	0	37
2:00	*	*	*	*	*	*	*	*	*	*	*	*	0
3:00	*	*	*	*	*	*	*	*	*	*	*	*	0
4:00	*	*	*	*	*	*	*	*	*	*	*	*	0
5:00	*	*	*	*	*	*	*	*	*	*	*	*	0
6:00	*	*	*	*	*	*	*	*	*	*	*	*	0
7:00	*	*	*	*	*	*	*	*	*	*	*	*	0
8:00	*	*	*	*	*	*	*	*	*	*	*	*	0
9:00	*	*	*	*	*	*	*	*	*	*	*	*	0
10:00	*	*	*	*	*	*	*	*	*	*	*	*	0
11:00	*	*	*	*	*	*	*	*	*	*	*	*	0
Total	106	23	31	78	359	1027	810	154	17	3	1	1	2610
Grand Total	279	74	141	450	2391	5386	3073	514	46	8	2	2	12368

Stats	Percentile	15th	50th	85th	95th
Speed		33	38	42	45
Mean Speed (Average)		37.0			
10 MPH Pace Speed		35-44			
Number in Pace		8445			
Percent in Pace		68.3%			
Number > 35 MPH		9033			
Percent > 35 MPH		73.0%			

Pioneer Valley Planning Commision

60 Congress Street
Springfield, MA 01104
(413) 781-6045 www.pvpc.org

Location : Agawam
Operator : AK, GK
Counter # : 2078
Road Class : U6
Direction: WB

Site Code: 10047
Station ID:
Mill St
W/O Cooper St

10/19/2022	> 15 - 20	> 20 - 25	> 25 - 30	> 30 - 35	> 35 - 40	> 40 - 45	> 45 - 50	> 50 - 55	> 55 - 60	> 60 - 65	> 65 - 70	> 70 MPH	Total
Time	0 - 15 MPH	MPH	MPH	MPH	MPH	MPH	MPH	MPH	MPH	MPH	MPH	MPH	
12:00 AM	*	*	*	*	*	*	*	*	*	*	*	*	0
1:00	*	*	*	*	*	*	*	*	*	*	*	*	0
2:00	*	*	*	*	*	*	*	*	*	*	*	*	0
3:00	*	*	*	*	*	*	*	*	*	*	*	*	0
4:00	*	*	*	*	*	*	*	*	*	*	*	*	0
5:00	*	*	*	*	*	*	*	*	*	*	*	*	0
6:00	*	*	*	*	*	*	*	*	*	*	*	*	0
7:00	*	*	*	*	*	*	*	*	*	*	*	*	0
8:00	*	*	*	*	*	*	*	*	*	*	*	*	0
9:00	2	0	1	13	55	63	46	15	2	1	0	0	198
10:00	1	2	0	6	27	113	116	28	2	0	0	0	295
11:00	1	1	2	11	61	117	116	27	3	0	0	0	339
12:00 PM	0	0	0	4	31	127	135	36	5	1	0	0	339
1:00	8	3	11	49	83	145	107	19	1	0	0	0	426
2:00	4	0	2	14	110	230	138	24	1	0	0	0	523
3:00	1	2	1	10	107	251	148	40	2	0	0	0	562
4:00	5	0	5	10	62	258	191	57	2	0	0	1	591
5:00	6	3	5	11	103	244	153	21	0	0	0	0	546
6:00	5	0	2	7	64	162	123	22	3	2	0	0	390
7:00	2	0	0	4	56	138	77	18	2	0	0	0	297
8:00	0	0	2	6	64	104	68	25	1	0	1	0	271
9:00	0	0	1	4	16	63	50	10	3	1	1	0	149
10:00	1	0	0	0	9	35	24	12	2	0	0	0	83
11:00	0	0	0	1	7	18	16	7	0	0	0	0	49
Total	36	11	32	150	855	2068	1508	361	29	5	2	1	5058

Pioneer Valley Planning Commision

60 Congress Street
Springfield, MA 01104
(413) 781-6045 www.pvpc.org

Location : Agawam
Operator : AK, GK
Counter # : 2078
Road Class : U6
Direction: WB

Site Code: 10047
Station ID:
Mill St
W/O Cooper St

10/20/2022	> 15 - 20	> 20 - 25	> 25 - 30	> 30 - 35	> 35 - 40	> 40 - 45	> 45 - 50	> 50 - 55	> 55 - 60	> 60 - 65	> 65 - 70	> 70 MPH	Total
Time	0 - 15 MPH	MPH	MPH	MPH	MPH	MPH	MPH	MPH	MPH	MPH	MPH	MPH	
12:00 AM	0	0	0	0	1	10	6	6	0	0	0	0	23
1:00	0	0	0	0	3	6	7	5	1	0	0	0	22
2:00	0	0	0	0	3	5	2	0	0	0	0	0	10
3:00	0	0	0	1	2	5	1	2	0	0	0	0	11
4:00	0	0	0	0	4	5	3	1	1	0	0	0	14
5:00	0	0	0	1	4	15	16	11	0	0	0	0	47
6:00	2	0	1	4	25	62	35	5	1	0	0	0	135
7:00	13	2	7	14	75	108	90	25	4	0	1	0	339
8:00	1	0	4	8	17	95	122	47	2	0	0	0	296
9:00	0	0	0	4	31	125	114	29	5	0	0	0	308
10:00	6	2	5	19	59	119	120	28	2	1	0	0	361
11:00	4	2	4	11	70	190	121	30	3	0	0	0	435
12:00 PM	6	2	0	5	38	189	165	28	4	1	0	0	438
1:00	2	0	2	18	51	206	124	27	3	0	0	0	433
2:00	0	1	0	11	81	189	140	35	4	0	0	0	462
3:00	1	0	1	3	64	209	226	54	6	1	0	0	565
4:00	4	8	4	8	83	241	211	43	7	1	0	0	610
5:00	5	5	4	8	84	228	183	39	3	0	0	0	559
6:00	17	7	19	38	123	153	73	9	1	0	0	0	440
7:00	7	5	11	20	64	112	64	13	1	0	0	0	297
8:00	7	3	5	27	81	97	38	11	1	0	0	0	270
9:00	3	1	3	18	47	56	45	16	2	1	2	0	194
10:00	0	0	0	1	14	41	35	9	2	2	0	0	104
11:00	0	0	0	0	5	25	24	4	0	0	1	0	59
Total	78	38	70	219	1029	2491	1965	477	53	7	4	0	6432

Pioneer Valley Planning Commission

60 Congress Street
Springfield, MA 01104
(413) 781-6045 www.pvpc.org

Location : Agawam
Operator : AK, GK
Counter # : 2078
Road Class : U6
Direction: WB

Site Code: 10047
Station ID:
Mill St
W/O Cooper St

10/21/2022	> 15 - 20	> 20 - 25	> 25 - 30	> 30 - 35	> 35 - 40	> 40 - 45	> 45 - 50	> 50 - 55	> 55 - 60	> 60 - 65	> 65 - 70	> 70 MPH	Total	
Time	0 - 15 MPH	MPH	MPH	MPH	MPH	MPH	MPH	MPH	MPH	MPH	MPH	MPH		
12:00 AM	0	0	1	1	2	6	12	2	1	0	0	1	0	26
1:00	0	0	0	0	1	6	6	2	1	0	0	0	0	16
2:00	0	0	0	0	3	3	6	0	0	0	0	0	0	12
3:00	0	0	0	0	2	6	4	0	0	0	0	0	0	12
4:00	2	1	1	0	2	4	9	2	1	0	0	0	0	22
5:00	0	1	0	0	5	13	16	5	1	0	0	0	0	41
6:00	2	1	0	3	18	43	41	11	3	0	0	0	0	122
7:00	12	6	6	15	80	101	89	43	5	0	0	0	0	357
8:00	1	0	0	1	18	97	117	44	5	1	0	0	0	284
9:00	1	0	2	6	17	118	108	40	3	1	0	0	0	296
10:00	2	1	0	2	19	126	136	32	4	0	0	0	0	322
11:00	2	1	3	8	43	136	155	29	4	0	0	0	0	381
12:00 PM	2	0	1	4	22	160	139	47	4	0	0	0	0	379
1:00	0	0	2	4	5	11	11	2	0	1	0	0	0	36
2:00	*	*	*	*	*	*	*	*	*	*	*	*	*	0
3:00	*	*	*	*	*	*	*	*	*	*	*	*	*	0
4:00	*	*	*	*	*	*	*	*	*	*	*	*	*	0
5:00	*	*	*	*	*	*	*	*	*	*	*	*	*	0
6:00	*	*	*	*	*	*	*	*	*	*	*	*	*	0
7:00	*	*	*	*	*	*	*	*	*	*	*	*	*	0
8:00	*	*	*	*	*	*	*	*	*	*	*	*	*	0
9:00	*	*	*	*	*	*	*	*	*	*	*	*	*	0
10:00	*	*	*	*	*	*	*	*	*	*	*	*	*	0
11:00	*	*	*	*	*	*	*	*	*	*	*	*	*	0
Total	24	11	16	44	237	830	849	259	32	3	0	1	0	2306
Grand Total	138	60	118	413	2121	5389	4322	1097	114	15	6	2	1	13796

Stats	Percentile	15th	50th	85th	95th
	Speed	34	39	44	47
	Mean Speed (Average)	38.5			
	10 MPH Pace Speed	35-44			
	Number in Pace	9667			
	Percent in Pace	70.1%			
	Number > 35 MPH	10947			
	Percent > 35 MPH	79.3%			

Pioneer Valley Planning Commision

60 Congress Street
Springfield, MA 01104
(413) 781-6045 www.pvpc.org

Location : Agawam
Operator : AK, GK
Counter # : 2078
Road Class : U6
Direction: Combined

Site Code: 10047
Station ID:
Mill St
W/O Cooper St

10/19/2022	> 15 - 20	> 20 - 25	> 25 - 30	> 30 - 35	> 35 - 40	> 40 - 45	> 45 - 50	> 50 - 55	> 55 - 60	> 60 - 65	> 65 - 70	> 70 MPH	Total
Time	0 - 15 MPH	MPH	MPH	MPH	MPH	MPH	MPH	MPH	MPH	MPH	MPH	MPH	
12:00 AM	*	*	*	*	*	*	*	*	*	*	*	*	0
1:00	*	*	*	*	*	*	*	*	*	*	*	*	0
2:00	*	*	*	*	*	*	*	*	*	*	*	*	0
3:00	*	*	*	*	*	*	*	*	*	*	*	*	0
4:00	*	*	*	*	*	*	*	*	*	*	*	*	0
5:00	*	*	*	*	*	*	*	*	*	*	*	*	0
6:00	*	*	*	*	*	*	*	*	*	*	*	*	0
7:00	*	*	*	*	*	*	*	*	*	*	*	*	0
8:00	*	*	*	*	*	*	*	*	*	*	*	*	0
9:00	3	1	5	32	104	128	94	21	2	1	0	0	391
10:00	5	2	2	15	81	281	197	42	2	0	0	0	627
11:00	5	1	3	15	109	279	190	37	4	0	0	0	643
12:00 PM	4	0	0	10	93	259	210	46	6	1	0	0	629
1:00	9	5	19	66	170	298	172	25	2	0	0	0	766
2:00	13	3	9	32	238	402	215	37	1	0	0	0	950
3:00	2	2	2	25	216	447	212	48	2	0	0	0	956
4:00	7	3	10	18	121	444	318	73	2	0	0	1	997
5:00	6	3	6	15	184	449	246	28	1	0	0	1	939
6:00	7	0	3	10	142	334	176	30	4	2	0	0	708
7:00	4	0	0	8	109	245	129	24	2	0	0	0	521
8:00	0	0	3	12	90	185	95	33	2	1	1	0	422
9:00	1	0	1	8	40	107	75	21	4	1	1	0	259
10:00	1	0	0	1	18	55	48	20	5	1	0	0	149
11:00	0	0	1	1	11	35	27	10	0	0	0	0	85
Total	67	20	64	268	1726	3948	2404	495	39	7	2	2	9042

Pioneer Valley Planning Commission

60 Congress Street
Springfield, MA 01104
(413) 781-6045 www.pvpc.org

Location : Agawam
Operator : AK, GK
Counter # : 2078
Road Class : U6
Direction: Combined

Site Code: 10047
Station ID:
Mill St
W/O Cooper St

10/20/2022	> 15 - 20	> 20 - 25	> 25 - 30	> 30 - 35	> 35 - 40	> 40 - 45	> 45 - 50	> 50 - 55	> 55 - 60	> 60 - 65	> 65 - 70	> 70 MPH	Total
Time 0 - 15 MPH	MPH	MPH	MPH	MPH	MPH	MPH	MPH	MPH	MPH	MPH	MPH	MPH	
12:00 AM	0	0	0	2	4	13	10	8	0	0	1	0	38
1:00	0	0	0	0	8	10	9	5	1	0	0	0	33
2:00	0	0	0	0	5	11	4	1	0	0	0	0	21
3:00	0	0	0	2	4	10	3	4	1	0	0	0	24
4:00	0	0	0	0	12	13	13	3	2	0	0	0	43
5:00	0	0	0	1	17	64	53	17	1	1	0	0	154
6:00	3	0	6	31	132	216	91	13	1	0	0	0	493
7:00	87	16	21	37	146	243	200	32	4	0	1	0	787
8:00	1	0	4	10	63	281	267	67	3	0	0	0	696
9:00	0	0	0	7	69	273	213	55	5	0	0	0	622
10:00	11	5	8	30	124	271	201	41	5	1	0	0	697
11:00	9	5	8	24	142	347	217	45	4	1	0	0	802
12:00 PM	11	2	1	10	121	366	248	51	4	2	0	0	816
1:00	9	3	4	26	109	379	200	41	7	0	0	0	778
2:00	9	4	1	23	156	378	241	56	4	0	0	0	873
3:00	2	0	2	11	128	373	340	70	7	1	0	0	935
4:00	16	12	10	32	176	424	305	57	8	1	0	0	1042
5:00	7	7	8	30	170	425	276	52	5	0	0	0	980
6:00	21	10	33	86	238	280	102	13	1	0	0	0	784
7:00	9	6	22	40	134	192	94	16	2	0	0	0	515
8:00	17	7	11	47	128	169	62	14	1	0	0	0	456
9:00	8	3	9	20	67	108	86	22	4	1	2	0	330
10:00	0	0	0	4	26	82	63	14	2	2	0	0	193
11:00	0	0	0	0	11	42	34	6	0	0	1	0	94
Total	220	80	148	473	2190	4970	3332	703	72	10	5	0	12206

Pioneer Valley Planning Commission

60 Congress Street
Springfield, MA 01104
(413) 781-6045 www.pvpc.org

Location : Agawam
Operator : AK, GK
Counter # : 2078
Road Class : U6
Direction: Combined

Site Code: 10047
Station ID:
Mill St
W/O Cooper St

10/21/2022	> 15 - 20	> 20 - 25	> 25 - 30	> 30 - 35	> 35 - 40	> 40 - 45	> 45 - 50	> 50 - 55	> 55 - 60	> 60 - 65	> 65 - 70	> 70 MPH	Total	
Time	0 - 15 MPH	MPH	MPH	MPH	MPH	MPH	MPH	MPH	MPH	MPH	MPH	MPH		
12:00 AM	0	1	1	2	8	9	17	3	1	1	1	2	0	46
1:00	0	0	0	0	4	11	8	2	1	1	0	0	0	27
2:00	0	0	0	0	4	9	8	1	0	0	0	0	0	22
3:00	0	0	0	0	5	12	9	3	0	0	0	0	0	29
4:00	2	1	1	0	8	13	18	6	3	0	0	0	0	52
5:00	0	2	0	1	19	46	52	17	5	0	0	0	0	142
6:00	2	2	6	25	103	155	101	26	4	0	0	0	0	424
7:00	110	22	24	33	120	224	196	57	6	0	0	0	0	792
8:00	1	2	0	9	61	245	282	80	9	1	0	0	0	690
9:00	3	1	2	9	38	246	227	56	4	1	0	0	0	587
10:00	3	1	3	7	51	271	227	47	5	1	0	0	0	616
11:00	4	1	3	22	89	272	248	50	5	0	0	0	0	694
12:00 PM	4	0	5	9	75	317	244	62	6	0	0	0	0	722
1:00	1	1	2	5	11	27	22	3	0	1	0	0	0	73
2:00	*	*	*	*	*	*	*	*	*	*	*	*	*	0
3:00	*	*	*	*	*	*	*	*	*	*	*	*	*	0
4:00	*	*	*	*	*	*	*	*	*	*	*	*	*	0
5:00	*	*	*	*	*	*	*	*	*	*	*	*	*	0
6:00	*	*	*	*	*	*	*	*	*	*	*	*	*	0
7:00	*	*	*	*	*	*	*	*	*	*	*	*	*	0
8:00	*	*	*	*	*	*	*	*	*	*	*	*	*	0
9:00	*	*	*	*	*	*	*	*	*	*	*	*	*	0
10:00	*	*	*	*	*	*	*	*	*	*	*	*	*	0
11:00	*	*	*	*	*	*	*	*	*	*	*	*	*	0
Total	130	34	47	122	596	1857	1659	413	49	6	1	2	0	4916
Grand Total	417	134	259	863	4512	10775	7395	1611	160	23	8	4	3	26164

Stats	Percentile	15th	50th	85th	95th
	Speed	33	38	43	46
	Mean Speed (Average)	37.8			
	10 MPH Pace Speed	35-44			
	Number in Pace	18112			
	Percent in Pace	69.2%			
	Number > 35 MPH	19980			
	Percent > 35 MPH	76.4%			

Pioneer Valley Planning Commission

60 Congress Street
Springfield, MA 01104
(413) 781-6045 www.pvpc.org

Location : Agawam
Operator : AK, GK
Counter # : 2383
Road Class : U6
Direction: WB

Site Code: 10048
Station ID:
Mill St
E/O Cooper St

10/19/2022	> 15 - 20	> 20 - 25	> 25 - 30	> 30 - 35	> 35 - 40	> 40 - 45	> 45 - 50	> 50 - 55	> 55 - 60	> 60 - 65	> 65 - 70	> 70 MPH	Total
Time	0 - 15 MPH	MPH	MPH	MPH	MPH	MPH	MPH	MPH	MPH	MPH	MPH	MPH	
12:00 AM	*	*	*	*	*	*	*	*	*	*	*	*	0
1:00	*	*	*	*	*	*	*	*	*	*	*	*	0
2:00	*	*	*	*	*	*	*	*	*	*	*	*	0
3:00	*	*	*	*	*	*	*	*	*	*	*	*	0
4:00	*	*	*	*	*	*	*	*	*	*	*	*	0
5:00	*	*	*	*	*	*	*	*	*	*	*	*	0
6:00	*	*	*	*	*	*	*	*	*	*	*	*	0
7:00	*	*	*	*	*	*	*	*	*	*	*	*	0
8:00	1	0	5	26	91	84	40	6	0	0	0	0	253
9:00	1	1	2	16	72	77	52	15	1	0	0	0	237
10:00	1	1	1	14	88	101	50	8	0	0	0	0	264
11:00	0	0	3	17	89	124	44	12	1	0	0	0	290
12:00 PM	0	0	2	33	114	108	44	6	1	0	0	0	309
1:00	1	0	1	36	147	135	43	7	0	0	0	0	370
2:00	2	0	0	31	168	156	57	14	2	0	0	0	430
3:00	1	0	1	32	203	220	78	7	1	0	0	0	543
4:00	1	2	8	72	229	174	46	6	0	0	0	0	538
5:00	2	1	2	38	171	156	53	7	1	0	0	0	431
6:00	0	0	3	24	97	132	42	7	0	0	0	0	305
7:00	0	0	0	13	85	76	22	2	1	0	0	0	199
8:00	0	0	2	15	52	86	16	0	0	0	0	0	171
9:00	0	0	0	8	39	38	18	3	0	1	0	0	107
10:00	0	0	0	4	19	24	8	1	1	0	0	0	57
11:00	0	0	0	2	18	11	3	1	0	0	0	0	35
Total	10	5	30	381	1682	1702	616	102	9	1	0	0	4539

Pioneer Valley Planning Commision

60 Congress Street
Springfield, MA 01104
(413) 781-6045 www.pvpc.org

Location : Agawam
Operator : AK, GK
Counter # : 2383
Road Class : U6
Direction: WB

Site Code: 10048
Station ID:
Mill St
E/O Cooper St

10/20/2022	> 15 - 20	> 20 - 25	> 25 - 30	> 30 - 35	> 35 - 40	> 40 - 45	> 45 - 50	> 50 - 55	> 55 - 60	> 60 - 65	> 65 - 70	> 70 MPH	Total
Time	0 - 15 MPH	MPH	MPH	MPH	MPH	MPH	MPH	MPH	MPH	MPH	MPH	MPH	
12:00 AM	0	0	1	2	5	6	4	1	0	0	0	0	19
1:00	0	0	0	8	5	2	0	0	0	0	0	0	15
2:00	0	0	0	1	3	1	1	0	0	0	0	0	6
3:00	0	0	1	4	4	4	1	0	0	0	0	0	14
4:00	0	0	0	3	6	7	5	0	0	0	0	0	21
5:00	0	0	1	18	36	22	14	0	0	1	0	0	92
6:00	6	3	10	67	169	89	14	4	0	0	0	0	362
7:00	0	0	1	13	82	101	47	9	0	1	0	0	254
8:00	0	1	0	24	88	107	52	7	1	0	0	0	280
9:00	0	0	0	15	81	109	47	6	2	0	0	0	260
10:00	0	0	5	32	133	139	36	7	0	0	0	0	352
11:00	0	0	4	15	124	146	56	9	1	0	0	0	355
12:00 PM	0	0	0	23	138	157	61	8	2	0	0	0	389
1:00	6	0	6	26	129	175	48	2	0	0	0	0	392
2:00	0	1	3	32	158	172	63	11	5	0	0	0	445
3:00	3	0	4	27	190	204	84	13	1	0	0	0	526
4:00	2	0	4	32	234	217	96	12	0	0	0	0	597
5:00	0	0	2	41	158	148	70	6	0	0	0	0	425
6:00	0	0	2	47	151	119	31	7	1	0	0	0	358
7:00	0	0	2	29	101	72	36	5	0	0	0	0	245
8:00	0	0	0	17	66	53	24	3	0	0	0	0	163
9:00	0	0	2	18	40	35	20	2	1	0	0	0	118
10:00	0	0	0	9	23	26	2	2	0	0	0	0	62
11:00	0	0	0	5	12	13	6	1	0	0	0	0	37
Total	17	5	48	508	2136	2124	818	115	14	2	0	0	5787

Pioneer Valley Planning Commission

60 Congress Street
Springfield, MA 01104
(413) 781-6045 www.pvpc.org

Location : Agawam
Operator : AK, GK
Counter # : 2383
Road Class : U6
Direction: WB

Site Code: 10048
Station ID:
Mill St
E/O Cooper St

10/21/2022	> 15 - 20	> 20 - 25	> 25 - 30	> 30 - 35	> 35 - 40	> 40 - 45	> 45 - 50	> 50 - 55	> 55 - 60	> 60 - 65	> 65 - 70	> 70 MPH	Total
Time	0 - 15 MPH	MPH	MPH	MPH	MPH	MPH	MPH	MPH	MPH	MPH	MPH	MPH	
12:00 AM	0	0	0	1	9	10	4	0	0	1	0	0	25
1:00	0	0	0	2	3	6	1	0	0	0	0	0	12
2:00	0	0	0	1	3	4	0	0	0	0	0	0	8
3:00	0	0	1	1	5	4	1	1	0	1	0	0	14
4:00	0	0	0	6	10	5	4	0	0	0	0	0	25
5:00	0	0	0	12	31	19	6	2	2	0	0	0	72
6:00	17	8	11	80	138	87	14	3	1	0	0	0	359
7:00	0	1	1	18	79	104	45	10	0	1	0	0	259
8:00	1	0	1	18	72	116	46	8	1	0	0	0	263
9:00	0	1	1	19	81	109	29	7	1	0	0	0	248
10:00	1	2	8	22	115	118	54	3	0	0	0	0	323
11:00	2	1	2	19	112	146	42	8	0	0	0	0	332
12:00 PM	0	0	2	6	36	29	17	3	0	0	0	0	93
1:00	*	*	*	*	*	*	*	*	*	*	*	*	0
2:00	*	*	*	*	*	*	*	*	*	*	*	*	0
3:00	*	*	*	*	*	*	*	*	*	*	*	*	0
4:00	*	*	*	*	*	*	*	*	*	*	*	*	0
5:00	*	*	*	*	*	*	*	*	*	*	*	*	0
6:00	*	*	*	*	*	*	*	*	*	*	*	*	0
7:00	*	*	*	*	*	*	*	*	*	*	*	*	0
8:00	*	*	*	*	*	*	*	*	*	*	*	*	0
9:00	*	*	*	*	*	*	*	*	*	*	*	*	0
10:00	*	*	*	*	*	*	*	*	*	*	*	*	0
11:00	*	*	*	*	*	*	*	*	*	*	*	*	0
Total	21	13	27	205	694	757	263	45	5	3	0	0	2033
Grand Total	48	23	105	1094	4512	4583	1697	262	28	6	0	0	12359

Stats	Percentile	15th	50th	85th	95th
Speed		31	35	40	43
Mean Speed (Average)		35.5			
10 MPH Pace Speed		30-39			
Number in Pace		9025			
Percent in Pace		73.0%			
Number > 35 MPH		6577			
Percent > 35 MPH		53.2%			

Pioneer Valley Planning Commision

60 Congress Street
Springfield, MA 01104
(413) 781-6045 www.pvpc.org

Location : Agawam
Operator : AK, GK
Counter # : 2383
Road Class : U6
Direction: EB

Site Code: 10048
Station ID:
Mill St
E/O Cooper St

10/19/2022	> 15 - 20	> 20 - 25	> 25 - 30	> 30 - 35	> 35 - 40	> 40 - 45	> 45 - 50	> 50 - 55	> 55 - 60	> 60 - 65	> 65 - 70	> 70 MPH	Total
Time	0 - 15 MPH	MPH	MPH	MPH	MPH	MPH	MPH	MPH	MPH	MPH	MPH	MPH	
12:00 AM	*	*	*	*	*	*	*	*	*	*	*	*	0
1:00	*	*	*	*	*	*	*	*	*	*	*	*	0
2:00	*	*	*	*	*	*	*	*	*	*	*	*	0
3:00	*	*	*	*	*	*	*	*	*	*	*	*	0
4:00	*	*	*	*	*	*	*	*	*	*	*	*	0
5:00	*	*	*	*	*	*	*	*	*	*	*	*	0
6:00	*	*	*	*	*	*	*	*	*	*	*	*	0
7:00	*	*	*	*	*	*	*	*	*	*	*	*	0
8:00	1	0	0	3	12	43	102	67	13	1	0	0	242
9:00	1	0	0	0	6	23	86	117	26	4	0	0	263
10:00	0	0	1	1	12	42	98	93	25	1	1	0	274
11:00	0	1	0	0	10	38	95	78	23	3	0	0	248
12:00 PM	1	0	0	1	13	26	103	70	27	4	0	0	245
1:00	0	0	0	2	27	87	168	68	15	3	2	0	372
2:00	1	0	0	1	14	84	153	89	22	4	0	0	368
3:00	0	0	0	0	14	47	122	130	27	1	0	0	341
4:00	0	0	0	5	16	38	124	108	25	4	1	0	321
5:00	2	0	0	0	7	52	119	94	23	2	1	0	300
6:00	0	0	0	1	6	43	90	75	14	2	0	0	231
7:00	0	0	1	6	16	30	63	44	13	2	0	0	176
8:00	0	0	0	0	6	24	59	32	6	5	1	0	133
9:00	0	0	0	0	4	8	28	23	6	3	0	0	72
10:00	0	0	0	0	0	3	14	21	6	0	0	0	44
11:00	0	0	0	0	0	3	6	8	5	1	0	0	23
Total	6	1	2	20	163	591	1430	1117	276	40	6	0	3653

Pioneer Valley Planning Commision

60 Congress Street
Springfield, MA 01104
(413) 781-6045 www.pvpc.org

Location : Agawam
Operator : AK, GK
Counter # : 2383
Road Class : U6
Direction: EB

Site Code: 10048
Station ID:
Mill St
E/O Cooper St

10/20/2022	> 15 - 20	> 20 - 25	> 25 - 30	> 30 - 35	> 35 - 40	> 40 - 45	> 45 - 50	> 50 - 55	> 55 - 60	> 60 - 65	> 65 - 70	> 70 MPH	Total	
Time	0 - 15 MPH	MPH	MPH	MPH	MPH	MPH	MPH	MPH	MPH	MPH	MPH	MPH		
12:00 AM	0	0	0	0	1	2	2	1	1	0	0	1	0	8
1:00	0	0	0	0	0	4	2	1	0	0	0	0	0	7
2:00	0	0	0	0	1	4	2	4	4	0	0	0	0	15
3:00	0	0	0	0	1	4	3	2	3	0	1	0	0	14
4:00	0	0	0	0	2	6	22	24	9	2	0	0	0	65
5:00	0	0	1	1	4	14	66	58	16	3	0	0	0	163
6:00	2	0	0	5	28	81	121	54	18	0	1	0	1	311
7:00	0	0	0	0	6	35	118	153	48	3	0	0	0	363
8:00	1	0	0	0	0	38	104	94	29	3	1	0	0	270
9:00	0	0	0	0	7	25	80	121	19	1	1	0	0	254
10:00	0	0	0	0	17	77	162	89	26	2	0	0	0	373
11:00	0	0	0	0	13	46	123	98	26	6	0	0	0	312
12:00 PM	0	0	0	2	12	36	145	93	19	4	2	0	0	313
1:00	0	0	0	1	20	93	133	69	24	3	0	0	0	343
2:00	0	0	0	0	20	40	134	111	20	3	0	0	0	328
3:00	0	0	0	1	12	38	101	107	32	2	0	0	0	293
4:00	12	0	0	2	8	34	131	133	31	3	0	0	0	354
5:00	0	0	1	3	15	51	132	100	23	2	0	0	0	327
6:00	3	0	0	1	11	55	102	61	11	0	0	0	0	244
7:00	1	0	0	0	14	34	71	37	7	1	0	0	0	165
8:00	0	0	0	5	25	59	87	57	7	5	1	0	0	246
9:00	0	0	0	0	3	15	33	31	10	3	0	0	0	95
10:00	0	0	0	2	0	8	21	12	5	0	0	0	0	48
11:00	0	0	0	0	1	4	4	8	3	0	0	0	0	20
Total	19	0	2	23	221	803	1899	1518	391	46	7	1	1	4931

Pioneer Valley Planning Commission

60 Congress Street
Springfield, MA 01104
(413) 781-6045 www.pvpc.org

Location : Agawam
Operator : AK, GK
Counter # : 2383
Road Class : U6
Direction: EB

Site Code: 10048
Station ID:
Mill St
E/O Cooper St

10/21/2022	> 15 - 20	> 20 - 25	> 25 - 30	> 30 - 35	> 35 - 40	> 40 - 45	> 45 - 50	> 50 - 55	> 55 - 60	> 60 - 65	> 65 - 70	> 70 MPH	Total	
Time	0 - 15 MPH	MPH	MPH	MPH	MPH	MPH	MPH	MPH	MPH	MPH	MPH	MPH		
12:00 AM	0	0	0	0	1	3	3	4	1	0	0	1	0	13
1:00	0	0	0	0	0	3	7	0	1	0	0	0	0	11
2:00	0	0	0	0	1	1	3	4	1	0	0	0	0	10
3:00	0	0	0	0	0	7	2	3	6	2	0	0	0	20
4:00	0	0	0	0	2	5	17	23	10	1	0	0	0	58
5:00	0	0	0	1	2	18	46	54	14	1	1	0	0	137
6:00	3	0	0	4	34	73	97	51	9	3	0	0	0	274
7:00	0	0	0	2	6	23	106	161	33	4	0	0	0	335
8:00	1	0	0	0	12	28	94	117	38	4	1	0	0	295
9:00	0	0	0	5	13	28	93	89	28	3	1	0	0	260
10:00	2	0	0	1	6	42	79	98	30	3	2	0	0	263
11:00	2	0	0	2	8	35	85	108	35	2	0	0	0	277
12:00 PM	0	0	0	3	4	20	33	41	9	3	0	0	0	113
1:00	*	*	*	*	*	*	*	*	*	*	*	*	*	0
2:00	*	*	*	*	*	*	*	*	*	*	*	*	*	0
3:00	*	*	*	*	*	*	*	*	*	*	*	*	*	0
4:00	*	*	*	*	*	*	*	*	*	*	*	*	*	0
5:00	*	*	*	*	*	*	*	*	*	*	*	*	*	0
6:00	*	*	*	*	*	*	*	*	*	*	*	*	*	0
7:00	*	*	*	*	*	*	*	*	*	*	*	*	*	0
8:00	*	*	*	*	*	*	*	*	*	*	*	*	*	0
9:00	*	*	*	*	*	*	*	*	*	*	*	*	*	0
10:00	*	*	*	*	*	*	*	*	*	*	*	*	*	0
11:00	*	*	*	*	*	*	*	*	*	*	*	*	*	0
Total	8	0	0	18	89	286	665	753	215	26	5	1	0	2066
Grand Total	33	1	4	61	473	1680	3994	3388	882	112	18	2	2	10650

Stats	Percentile	15th	50th	85th	95th
Speed		39	44	49	52
Mean Speed (Average)		43.8			
10 MPH Pace Speed		40-49			
Number in Pace		7348			
Percent in Pace		69.0%			
Number > 35 MPH		10078			
Percent > 35 MPH		94.6%			

Pioneer Valley Planning Commission

60 Congress Street
Springfield, MA 01104
(413) 781-6045 www.pvpc.org

Location : Agawam
Operator : AK, GK
Counter # : 2383
Road Class : U6
Direction: Combined

Site Code: 10048
Station ID:
Mill St
E/O Cooper St

10/19/2022	> 15 - 20	> 20 - 25	> 25 - 30	> 30 - 35	> 35 - 40	> 40 - 45	> 45 - 50	> 50 - 55	> 55 - 60	> 60 - 65	> 65 - 70	> 70 MPH	Total
Time	0 - 15 MPH	MPH	MPH	MPH	MPH	MPH	MPH	MPH	MPH	MPH	MPH	MPH	
12:00 AM	*	*	*	*	*	*	*	*	*	*	*	*	0
1:00	*	*	*	*	*	*	*	*	*	*	*	*	0
2:00	*	*	*	*	*	*	*	*	*	*	*	*	0
3:00	*	*	*	*	*	*	*	*	*	*	*	*	0
4:00	*	*	*	*	*	*	*	*	*	*	*	*	0
5:00	*	*	*	*	*	*	*	*	*	*	*	*	0
6:00	*	*	*	*	*	*	*	*	*	*	*	*	0
7:00	*	*	*	*	*	*	*	*	*	*	*	*	0
8:00	2	0	5	29	103	127	142	73	13	1	0	0	495
9:00	2	1	2	16	78	100	138	132	27	4	0	0	500
10:00	1	1	2	15	100	143	148	101	25	1	1	0	538
11:00	0	1	3	17	99	162	139	90	24	3	0	0	538
12:00 PM	1	0	2	34	127	134	147	76	28	4	0	0	554
1:00	1	0	1	38	174	222	211	75	15	3	2	0	742
2:00	3	0	0	32	182	240	210	103	24	4	0	0	798
3:00	1	0	1	32	217	267	200	137	28	1	0	0	884
4:00	1	2	8	77	245	212	170	114	25	4	1	0	859
5:00	4	1	2	38	178	208	172	101	24	2	1	0	731
6:00	0	0	3	25	103	175	132	82	14	2	0	0	536
7:00	0	0	1	19	101	106	85	46	14	2	0	0	375
8:00	0	0	2	15	58	110	75	32	6	5	1	0	304
9:00	0	0	0	8	43	46	46	26	6	4	0	0	179
10:00	0	0	0	4	19	27	22	22	7	0	0	0	101
11:00	0	0	0	2	18	14	9	9	5	1	0	0	58
Total	16	6	32	401	1845	2293	2046	1219	285	41	6	0	8192

Pioneer Valley Planning Commision

60 Congress Street
Springfield, MA 01104
(413) 781-6045 www.pvpc.org

Location : Agawam
Operator : AK, GK
Counter # : 2383
Road Class : U6
Direction: Combined

Site Code: 10048
Station ID:
Mill St
E/O Cooper St

10/20/2022	> 15 - 20	> 20 - 25	> 25 - 30	> 30 - 35	> 35 - 40	> 40 - 45	> 45 - 50	> 50 - 55	> 55 - 60	> 60 - 65	> 65 - 70	> 70 MPH	Total	
Time	0 - 15 MPH	MPH	MPH	MPH	MPH	MPH	MPH	MPH	MPH	MPH	MPH	MPH		
12:00 AM	0	0	1	2	6	8	6	2	1	0	0	1	0	27
1:00	0	0	0	8	5	6	2	1	0	0	0	0	0	22
2:00	0	0	0	1	4	5	3	4	4	0	0	0	0	21
3:00	0	0	1	4	5	8	4	2	3	0	1	0	0	28
4:00	0	0	0	3	8	13	27	24	9	2	0	0	0	86
5:00	0	0	2	19	40	36	80	58	16	4	0	0	0	255
6:00	8	3	10	72	197	170	135	58	18	0	1	0	1	673
7:00	0	0	1	13	88	136	165	162	48	4	0	0	0	617
8:00	1	1	0	24	88	145	156	101	30	3	1	0	0	550
9:00	0	0	0	15	88	134	127	127	21	1	1	0	0	514
10:00	0	0	5	32	150	216	198	96	26	2	0	0	0	725
11:00	0	0	4	15	137	192	179	107	27	6	0	0	0	667
12:00 PM	0	0	0	25	150	193	206	101	21	4	2	0	0	702
1:00	6	0	6	27	149	268	181	71	24	3	0	0	0	735
2:00	0	1	3	32	178	212	197	122	25	3	0	0	0	773
3:00	3	0	4	28	202	242	185	120	33	2	0	0	0	819
4:00	14	0	4	34	242	251	227	145	31	3	0	0	0	951
5:00	0	0	3	44	173	199	202	106	23	2	0	0	0	752
6:00	3	0	2	48	162	174	133	68	12	0	0	0	0	602
7:00	1	0	2	29	115	106	107	42	7	1	0	0	0	410
8:00	0	0	0	22	91	112	111	60	7	5	1	0	0	409
9:00	0	0	2	18	43	50	53	33	11	3	0	0	0	213
10:00	0	0	0	11	23	34	23	14	5	0	0	0	0	110
11:00	0	0	0	5	13	17	10	9	3	0	0	0	0	57
Total	36	5	50	531	2357	2927	2717	1633	405	48	7	1	1	10718

Pioneer Valley Planning Commission

60 Congress Street
Springfield, MA 01104
(413) 781-6045 www.pvpc.org

Location : Agawam
Operator : AK, GK
Counter # : 2383
Road Class : U6
Direction: Combined

Site Code: 10048
Station ID:
Mill St
E/O Cooper St

10/21/2022	> 15 - 20	> 20 - 25	> 25 - 30	> 30 - 35	> 35 - 40	> 40 - 45	> 45 - 50	> 50 - 55	> 55 - 60	> 60 - 65	> 65 - 70	> 70 MPH	Total	
Time	0 - 15 MPH	MPH	MPH	MPH	MPH	MPH	MPH	MPH	MPH	MPH	MPH	MPH		
12:00 AM	0	0	0	1	10	13	7	4	1	1	0	1	0	38
1:00	0	0	0	2	3	9	8	0	1	0	0	0	0	23
2:00	0	0	0	1	4	5	3	4	1	0	0	0	0	18
3:00	0	0	1	1	5	11	3	4	6	3	0	0	0	34
4:00	0	0	0	6	12	10	21	23	10	1	0	0	0	83
5:00	0	0	0	13	33	37	52	56	16	1	1	0	0	209
6:00	20	8	11	84	172	160	111	54	10	3	0	0	0	633
7:00	0	1	1	20	85	127	151	171	33	5	0	0	0	594
8:00	2	0	1	18	84	144	140	125	39	4	1	0	0	558
9:00	0	1	1	24	94	137	122	96	29	3	1	0	0	508
10:00	3	2	8	23	121	160	133	101	30	3	2	0	0	586
11:00	4	1	2	21	120	181	127	116	35	2	0	0	0	609
12:00 PM	0	0	2	9	40	49	50	44	9	3	0	0	0	206
1:00	*	*	*	*	*	*	*	*	*	*	*	*	*	0
2:00	*	*	*	*	*	*	*	*	*	*	*	*	*	0
3:00	*	*	*	*	*	*	*	*	*	*	*	*	*	0
4:00	*	*	*	*	*	*	*	*	*	*	*	*	*	0
5:00	*	*	*	*	*	*	*	*	*	*	*	*	*	0
6:00	*	*	*	*	*	*	*	*	*	*	*	*	*	0
7:00	*	*	*	*	*	*	*	*	*	*	*	*	*	0
8:00	*	*	*	*	*	*	*	*	*	*	*	*	*	0
9:00	*	*	*	*	*	*	*	*	*	*	*	*	*	0
10:00	*	*	*	*	*	*	*	*	*	*	*	*	*	0
11:00	*	*	*	*	*	*	*	*	*	*	*	*	*	0
Total	29	13	27	223	783	1043	928	798	220	29	5	1	0	4099
Grand Total	81	24	109	1155	4985	6263	5691	3650	910	118	18	2	3	23009

Stats	Percentile	15th	50th	85th	95th
Speed		33	39	46	50
Mean Speed (Average)		39.3			
10 MPH Pace Speed		35-44			
Number in Pace		11940			
Percent in Pace		51.9%			
Number > 35 MPH		16656			
Percent > 35 MPH		72.4%			

Pioneer Valley Planning Commision

60 Congress Street
Springfield, MA 01104
(413) 781-6045 www.pvpc.org

Location : Agawam
Operator : AK, GK
Counter # : 2073
Road Class : U6
Direction: NB

Site Code: 10049
Station ID:
Cooper St
N/O Mill St

10/19/2022	> 15 - 20	> 20 - 25	> 25 - 30	> 30 - 35	> 35 - 40	> 40 - 45	> 45 - 50	> 50 - 55	> 55 - 60	> 60 - 65	> 65 - 70	> 70 MPH	Total
Time	0 - 15 MPH	MPH	MPH	MPH	MPH	MPH	MPH	MPH	MPH	MPH	MPH	MPH	
12:00 AM	*	*	*	*	*	*	*	*	*	*	*	*	0
1:00	*	*	*	*	*	*	*	*	*	*	*	*	0
2:00	*	*	*	*	*	*	*	*	*	*	*	*	0
3:00	*	*	*	*	*	*	*	*	*	*	*	*	0
4:00	*	*	*	*	*	*	*	*	*	*	*	*	0
5:00	*	*	*	*	*	*	*	*	*	*	*	*	0
6:00	*	*	*	*	*	*	*	*	*	*	*	*	0
7:00	*	*	*	*	*	*	*	*	*	*	*	*	0
8:00	*	*	*	*	*	*	*	*	*	*	*	*	0
9:00	*	*	*	*	*	*	*	*	*	*	*	*	0
10:00	0	0	1	1	17	37	21	5	0	0	0	0	82
11:00	0	0	0	5	14	33	28	3	0	0	0	0	83
12:00 PM	0	0	1	2	25	35	26	5	0	0	0	0	94
1:00	0	2	5	21	29	53	29	6	1	0	0	0	146
2:00	0	1	1	9	26	79	39	1	0	0	0	0	156
3:00	0	2	1	9	37	66	34	6	0	0	0	0	155
4:00	0	0	0	7	25	50	34	3	1	0	0	0	120
5:00	0	1	1	9	34	59	22	1	0	0	0	0	127
6:00	0	0	1	9	36	52	9	2	0	0	0	0	109
7:00	0	0	1	5	30	28	5	2	0	0	0	0	71
8:00	0	0	0	6	17	26	2	0	0	0	0	0	51
9:00	0	0	0	3	8	13	6	0	0	0	0	0	30
10:00	0	0	0	0	4	6	2	1	0	0	0	0	13
11:00	0	0	0	0	3	1	4	0	0	0	0	0	8
Total	0	6	12	86	305	538	261	35	2	0	0	0	1245

Pioneer Valley Planning Commision

60 Congress Street
Springfield, MA 01104
(413) 781-6045 www.pvpc.org

Location : Agawam
Operator : AK, GK
Counter # : 2073
Road Class : U6
Direction: NB

Site Code: 10049
Station ID:
Cooper St
N/O Mill St

10/20/2022	> 15 - 20	> 20 - 25	> 25 - 30	> 30 - 35	> 35 - 40	> 40 - 45	> 45 - 50	> 50 - 55	> 55 - 60	> 60 - 65	> 65 - 70	> 70 MPH	Total
Time	0 - 15 MPH	MPH	MPH	MPH	MPH	MPH	MPH	MPH	MPH	MPH	MPH	MPH	
12:00 AM	0	0	0	1	0	1	0	1	0	0	0	0	3
1:00	0	0	0	1	1	2	1	0	0	0	0	0	5
2:00	0	0	1	0	0	0	1	0	0	0	0	0	2
3:00	0	0	0	0	0	0	1	0	0	0	0	0	1
4:00	0	0	0	0	2	1	0	1	0	0	0	0	4
5:00	0	0	0	0	1	3	4	1	0	0	0	0	9
6:00	0	0	0	2	9	29	7	0	0	0	0	0	47
7:00	0	2	0	5	32	54	28	0	0	0	0	0	121
8:00	0	1	3	3	15	40	29	9	0	0	0	0	100
9:00	0	0	0	1	15	26	21	9	1	0	0	0	73
10:00	0	1	4	14	44	46	16	3	0	0	2	0	130
11:00	1	0	0	3	36	62	30	1	1	1	0	0	135
12:00 PM	0	2	1	5	22	51	26	4	0	0	0	0	111
1:00	0	1	2	6	23	36	30	6	0	0	0	0	104
2:00	0	1	1	3	25	68	35	5	1	0	0	0	139
3:00	0	1	2	3	21	52	30	6	1	0	0	0	116
4:00	0	0	1	6	25	54	38	6	1	1	0	0	132
5:00	0	1	3	7	27	59	44	4	0	0	0	0	145
6:00	0	0	2	3	46	32	6	3	1	0	0	0	93
7:00	0	1	1	1	19	23	12	1	1	0	0	0	59
8:00	0	0	0	2	25	22	9	4	0	0	0	0	62
9:00	0	0	1	5	5	26	5	1	0	0	0	0	43
10:00	0	0	0	0	6	8	3	3	0	1	0	0	21
11:00	0	0	0	1	3	3	2	2	0	0	0	0	11
Total	1	11	22	72	402	698	378	70	7	3	2	0	1666

Pioneer Valley Planning Commission

60 Congress Street
Springfield, MA 01104
(413) 781-6045 www.pvpc.org

Location : Agawam
Operator : AK, GK
Counter # : 2073
Road Class : U6
Direction: NB

Site Code: 10049
Station ID:
Cooper St
N/O Mill St

10/21/2022	> 15 - 20	> 20 - 25	> 25 - 30	> 30 - 35	> 35 - 40	> 40 - 45	> 45 - 50	> 50 - 55	> 55 - 60	> 60 - 65	> 65 - 70	> 70 MPH	Total
Time	0 - 15 MPH	MPH	MPH	MPH	MPH	MPH	MPH	MPH	MPH	MPH	MPH	MPH	
12:00 AM	0	0	0	2	0	0	2	0	0	0	0	0	4
1:00	0	0	0	1	0	0	1	0	0	0	0	0	2
2:00	0	0	1	0	1	0	0	1	0	0	0	0	3
3:00	0	0	0	0	1	0	0	0	0	0	0	0	1
4:00	0	0	0	0	2	2	1	0	0	0	0	0	5
5:00	0	0	0	1	4	6	5	0	0	0	0	0	16
6:00	0	1	0	1	18	25	9	0	0	0	0	0	54
7:00	0	1	2	3	18	56	32	7	0	0	0	0	119
8:00	0	1	2	1	13	31	26	5	1	0	0	0	80
9:00	0	0	1	5	15	34	23	4	2	0	0	0	84
10:00	0	2	0	5	6	35	24	8	0	0	0	0	80
11:00	1	0	1	4	22	38	21	5	0	0	0	0	92
12:00 PM	0	0	1	1	19	43	33	6	1	0	0	0	104
1:00	0	0	0	4	6	12	12	0	0	0	0	0	34
2:00	*	*	*	*	*	*	*	*	*	*	*	*	0
3:00	*	*	*	*	*	*	*	*	*	*	*	*	0
4:00	*	*	*	*	*	*	*	*	*	*	*	*	0
5:00	*	*	*	*	*	*	*	*	*	*	*	*	0
6:00	*	*	*	*	*	*	*	*	*	*	*	*	0
7:00	*	*	*	*	*	*	*	*	*	*	*	*	0
8:00	*	*	*	*	*	*	*	*	*	*	*	*	0
9:00	*	*	*	*	*	*	*	*	*	*	*	*	0
10:00	*	*	*	*	*	*	*	*	*	*	*	*	0
11:00	*	*	*	*	*	*	*	*	*	*	*	*	0
Total	1	5	8	28	125	282	189	36	4	0	0	0	678
Grand Total	2	22	42	186	832	1518	828	141	13	3	2	0	3589

Stats	Percentile	15th	50th	85th	95th
Speed		33	37	42	45
Mean Speed (Average)		37.2			
10 MPH Pace Speed		31-40			
Number in Pace		2349			
Percent in Pace		65.4%			
Number > 35 MPH		2505			
Percent > 35 MPH		69.8%			

Pioneer Valley Planning Commission

60 Congress Street
Springfield, MA 01104
(413) 781-6045 www.pvpc.org

Location : Agawam
Operator : AK, GK
Counter # : 2073
Road Class : U6
Direction: SB

Site Code: 10049
Station ID:
Cooper St
N/O Mill St

10/19/2022	> 15 - 20	> 20 - 25	> 25 - 30	> 30 - 35	> 35 - 40	> 40 - 45	> 45 - 50	> 50 - 55	> 55 - 60	> 60 - 65	> 65 - 70	> 70 MPH	Total
Time	0 - 15 MPH	MPH	MPH	MPH	MPH	MPH	MPH	MPH	MPH	MPH	MPH	MPH	
12:00 AM	*	*	*	*	*	*	*	*	*	*	*	*	0
1:00	*	*	*	*	*	*	*	*	*	*	*	*	0
2:00	*	*	*	*	*	*	*	*	*	*	*	*	0
3:00	*	*	*	*	*	*	*	*	*	*	*	*	0
4:00	*	*	*	*	*	*	*	*	*	*	*	*	0
5:00	*	*	*	*	*	*	*	*	*	*	*	*	0
6:00	*	*	*	*	*	*	*	*	*	*	*	*	0
7:00	*	*	*	*	*	*	*	*	*	*	*	*	0
8:00	*	*	*	*	*	*	*	*	*	*	*	*	0
9:00	*	*	*	*	*	*	*	*	*	*	*	*	0
10:00	0	0	1	5	25	34	10	1	0	0	0	0	76
11:00	0	0	2	10	35	43	14	3	0	0	0	0	107
12:00 PM	0	0	0	5	30	45	15	0	0	0	0	0	95
1:00	2	4	6	8	38	62	25	3	0	0	0	0	148
2:00	1	2	4	6	37	58	27	1	2	0	0	0	138
3:00	2	2	7	18	49	69	12	1	0	0	0	0	160
4:00	0	0	1	6	26	70	32	5	1	0	0	0	141
5:00	0	1	0	7	37	58	20	3	0	0	1	0	127
6:00	0	0	3	11	34	29	8	2	0	0	0	0	87
7:00	0	0	1	13	26	21	6	1	0	0	0	0	68
8:00	0	0	0	4	18	19	4	2	0	0	0	0	47
9:00	0	0	0	3	7	11	0	0	0	0	0	0	21
10:00	0	0	0	1	5	3	2	0	0	0	0	0	11
11:00	0	0	0	2	3	0	0	0	0	0	0	0	5
Total	5	9	25	99	370	522	175	22	3	0	1	0	1231

Pioneer Valley Planning Commision

60 Congress Street
Springfield, MA 01104
(413) 781-6045 www.pvpc.org

Location : Agawam
Operator : AK, GK
Counter # : 2073
Road Class : U6
Direction: SB

Site Code: 10049
Station ID:
Cooper St
N/O Mill St

10/20/2022	> 15 - 20	> 20 - 25	> 25 - 30	> 30 - 35	> 35 - 40	> 40 - 45	> 45 - 50	> 50 - 55	> 55 - 60	> 60 - 65	> 65 - 70	> 70 MPH	Total
Time	0 - 15 MPH	MPH	MPH	MPH	MPH	MPH	MPH	MPH	MPH	MPH	MPH	MPH	
12:00 AM	0	0	0	0	0	0	1	1	0	0	0	0	2
1:00	0	0	0	0	1	1	0	0	0	0	0	0	2
2:00	0	0	0	0	0	0	0	0	0	0	0	0	0
3:00	0	0	0	0	1	0	0	0	0	0	0	0	1
4:00	0	0	0	0	4	1	1	0	0	0	0	0	6
5:00	0	0	0	2	3	5	1	1	0	0	0	0	12
6:00	0	0	2	9	41	31	4	0	0	0	0	0	87
7:00	26	5	4	18	24	28	7	2	0	0	0	0	114
8:00	0	0	0	7	16	33	18	2	1	0	0	0	77
9:00	0	1	0	2	22	32	14	1	0	0	0	0	72
10:00	1	2	1	9	33	45	14	3	0	0	0	0	108
11:00	1	1	0	6	28	58	19	7	2	0	0	0	122
12:00 PM	0	1	4	5	27	55	17	3	0	0	0	0	112
1:00	0	1	1	6	33	53	21	1	0	0	0	0	116
2:00	0	0	1	8	38	59	33	5	0	0	0	0	144
3:00	0	0	3	4	26	52	37	5	1	0	0	0	128
4:00	0	0	0	9	40	73	37	3	0	0	0	0	162
5:00	0	1	1	7	33	57	26	4	0	0	0	0	129
6:00	0	0	2	21	36	36	14	1	0	0	0	0	110
7:00	0	0	0	6	19	32	9	0	0	0	0	0	66
8:00	0	0	0	3	16	23	2	1	0	0	0	0	45
9:00	0	0	0	3	8	9	2	1	2	0	0	0	25
10:00	0	0	0	0	7	4	1	0	0	0	0	0	12
11:00	0	0	0	0	2	4	2	0	0	0	0	0	8
Total	28	12	19	125	458	691	280	41	6	0	0	0	1660

Pioneer Valley Planning Commision

60 Congress Street
Springfield, MA 01104
(413) 781-6045 www.pvpc.org

Location : Agawam
Operator : AK, GK
Counter # : 2073
Road Class : U6
Direction: SB

Site Code: 10049
Station ID:
Cooper St
N/O Mill St

10/21/2022	> 15 - 20	> 20 - 25	> 25 - 30	> 30 - 35	> 35 - 40	> 40 - 45	> 45 - 50	> 50 - 55	> 55 - 60	> 60 - 65	> 65 - 70	> 70 MPH	Total
Time	0 - 15 MPH	MPH	MPH	MPH	MPH	MPH	MPH	MPH	MPH	MPH	MPH	MPH	
12:00 AM	0	0	0	1	0	0	0	0	0	0	0	0	1
1:00	0	0	1	0	0	0	0	0	0	0	0	0	1
2:00	0	0	0	0	0	0	0	0	0	0	0	0	0
3:00	0	0	0	0	0	2	1	0	0	0	0	0	3
4:00	0	0	0	0	2	1	0	0	0	0	0	0	3
5:00	0	0	0	2	4	6	1	0	0	0	0	0	13
6:00	0	0	4	16	26	23	1	2	0	0	0	0	72
7:00	36	5	3	14	21	19	13	3	0	0	0	0	114
8:00	0	0	2	5	17	40	17	2	0	0	0	0	83
9:00	1	1	3	4	32	33	12	2	1	0	0	0	89
10:00	0	0	1	3	20	47	14	4	1	0	0	0	90
11:00	0	1	1	7	28	43	20	6	0	0	0	0	106
12:00 PM	0	0	2	4	20	51	22	1	0	0	0	0	100
1:00	0	1	0	1	10	14	2	0	0	1	0	0	29
2:00	*	*	*	*	*	*	*	*	*	*	*	*	0
3:00	*	*	*	*	*	*	*	*	*	*	*	*	0
4:00	*	*	*	*	*	*	*	*	*	*	*	*	0
5:00	*	*	*	*	*	*	*	*	*	*	*	*	0
6:00	*	*	*	*	*	*	*	*	*	*	*	*	0
7:00	*	*	*	*	*	*	*	*	*	*	*	*	0
8:00	*	*	*	*	*	*	*	*	*	*	*	*	0
9:00	*	*	*	*	*	*	*	*	*	*	*	*	0
10:00	*	*	*	*	*	*	*	*	*	*	*	*	0
11:00	*	*	*	*	*	*	*	*	*	*	*	*	0
Total	37	8	17	57	180	279	103	20	2	1	0	0	704
Grand Total	70	29	61	281	1008	1492	558	83	11	1	1	0	3595

Stats	Percentile	15th	50th	85th	95th
	Speed	31	36	40	44
	Mean Speed (Average)	35.4			
	10 MPH Pace Speed	30-39			
	Number in Pace	2476			
	Percent in Pace	68.9%			
	Number > 35 MPH	2146			
	Percent > 35 MPH	59.7%			

Pioneer Valley Planning Commision

60 Congress Street
Springfield, MA 01104
(413) 781-6045 www.pvpc.org

Location : Agawam
Operator : AK, GK
Counter # : 2073
Road Class : U6
Direction: Combined

Site Code: 10049
Station ID:
Cooper St
N/O Mill St

10/19/2022	> 15 - 20	> 20 - 25	> 25 - 30	> 30 - 35	> 35 - 40	> 40 - 45	> 45 - 50	> 50 - 55	> 55 - 60	> 60 - 65	> 65 - 70	> 70 MPH	Total
Time	0 - 15 MPH	MPH	MPH	MPH	MPH	MPH	MPH	MPH	MPH	MPH	MPH	MPH	
12:00 AM	*	*	*	*	*	*	*	*	*	*	*	*	0
1:00	*	*	*	*	*	*	*	*	*	*	*	*	0
2:00	*	*	*	*	*	*	*	*	*	*	*	*	0
3:00	*	*	*	*	*	*	*	*	*	*	*	*	0
4:00	*	*	*	*	*	*	*	*	*	*	*	*	0
5:00	*	*	*	*	*	*	*	*	*	*	*	*	0
6:00	*	*	*	*	*	*	*	*	*	*	*	*	0
7:00	*	*	*	*	*	*	*	*	*	*	*	*	0
8:00	*	*	*	*	*	*	*	*	*	*	*	*	0
9:00	*	*	*	*	*	*	*	*	*	*	*	*	0
10:00	0	0	2	6	42	71	31	6	0	0	0	0	158
11:00	0	0	2	15	49	76	42	6	0	0	0	0	190
12:00 PM	0	0	1	7	55	80	41	5	0	0	0	0	189
1:00	2	6	11	29	67	115	54	9	1	0	0	0	294
2:00	1	3	5	15	63	137	66	2	2	0	0	0	294
3:00	2	4	8	27	86	135	46	7	0	0	0	0	315
4:00	0	0	1	13	51	120	66	8	2	0	0	0	261
5:00	0	2	1	16	71	117	42	4	0	0	1	0	254
6:00	0	0	4	20	70	81	17	4	0	0	0	0	196
7:00	0	0	2	18	56	49	11	3	0	0	0	0	139
8:00	0	0	0	10	35	45	6	2	0	0	0	0	98
9:00	0	0	0	6	15	24	6	0	0	0	0	0	51
10:00	0	0	0	1	9	9	4	1	0	0	0	0	24
11:00	0	0	0	2	6	1	4	0	0	0	0	0	13
Total	5	15	37	185	675	1060	436	57	5	0	1	0	2476

Pioneer Valley Planning Commision

60 Congress Street
Springfield, MA 01104
(413) 781-6045 www.pvpc.org

Location : Agawam
Operator : AK, GK
Counter # : 2073
Road Class : U6
Direction: Combined

Site Code: 10049
Station ID:
Cooper St
N/O Mill St

10/20/2022	> 15 - 20	> 20 - 25	> 25 - 30	> 30 - 35	> 35 - 40	> 40 - 45	> 45 - 50	> 50 - 55	> 55 - 60	> 60 - 65	> 65 - 70	> 70 MPH	Total
Time 0 - 15 MPH	MPH	MPH	MPH	MPH	MPH	MPH	MPH	MPH	MPH	MPH	MPH	MPH	
12:00 AM	0	0	0	1	0	1	1	2	0	0	0	0	5
1:00	0	0	0	1	2	3	1	0	0	0	0	0	7
2:00	0	0	1	0	0	0	1	0	0	0	0	0	2
3:00	0	0	0	0	1	0	1	0	0	0	0	0	2
4:00	0	0	0	0	6	2	1	1	0	0	0	0	10
5:00	0	0	0	2	4	8	5	2	0	0	0	0	21
6:00	0	0	2	11	50	60	11	0	0	0	0	0	134
7:00	26	7	4	23	56	82	35	2	0	0	0	0	235
8:00	0	1	3	10	31	73	47	11	1	0	0	0	177
9:00	0	1	0	3	37	58	35	10	1	0	0	0	145
10:00	1	3	5	23	77	91	30	6	0	0	2	0	238
11:00	2	1	0	9	64	120	49	8	3	1	0	0	257
12:00 PM	0	3	5	10	49	106	43	7	0	0	0	0	223
1:00	0	2	3	12	56	89	51	7	0	0	0	0	220
2:00	0	1	2	11	63	127	68	10	1	0	0	0	283
3:00	0	1	5	7	47	104	67	11	2	0	0	0	244
4:00	0	0	1	15	65	127	75	9	1	1	0	0	294
5:00	0	2	4	14	60	116	70	8	0	0	0	0	274
6:00	0	0	4	24	82	68	20	4	1	0	0	0	203
7:00	0	1	1	7	38	55	21	1	1	0	0	0	125
8:00	0	0	0	5	41	45	11	5	0	0	0	0	107
9:00	0	0	1	8	13	35	7	2	2	0	0	0	68
10:00	0	0	0	0	13	12	4	3	0	1	0	0	33
11:00	0	0	0	1	5	7	4	2	0	0	0	0	19
Total	29	23	41	197	860	1389	658	111	13	3	2	0	3326

Pioneer Valley Planning Commission

60 Congress Street
Springfield, MA 01104
(413) 781-6045 www.pvpc.org

Location : Agawam
Operator : AK, GK
Counter # : 2073
Road Class : U6
Direction: Combined

Site Code: 10049
Station ID:
Cooper St
N/O Mill St

10/21/2022	> 15 - 20	> 20 - 25	> 25 - 30	> 30 - 35	> 35 - 40	> 40 - 45	> 45 - 50	> 50 - 55	> 55 - 60	> 60 - 65	> 65 - 70	> 70 MPH	Total
Time	0 - 15 MPH	MPH	MPH	MPH	MPH	MPH	MPH	MPH	MPH	MPH	MPH	MPH	
12:00 AM	0	0	0	3	0	0	2	0	0	0	0	0	5
1:00	0	0	1	1	0	0	1	0	0	0	0	0	3
2:00	0	0	1	0	1	0	0	1	0	0	0	0	3
3:00	0	0	0	0	1	2	1	0	0	0	0	0	4
4:00	0	0	0	0	4	3	1	0	0	0	0	0	8
5:00	0	0	0	3	8	12	6	0	0	0	0	0	29
6:00	0	1	4	17	44	48	10	2	0	0	0	0	126
7:00	36	6	5	17	39	75	45	10	0	0	0	0	233
8:00	0	1	4	6	30	71	43	7	1	0	0	0	163
9:00	1	1	4	9	47	67	35	6	3	0	0	0	173
10:00	0	2	1	8	26	82	38	12	1	0	0	0	170
11:00	1	1	2	11	50	81	41	11	0	0	0	0	198
12:00 PM	0	0	3	5	39	94	55	7	1	0	0	0	204
1:00	0	1	0	5	16	26	14	0	0	1	0	0	63
2:00	*	*	*	*	*	*	*	*	*	*	*	*	0
3:00	*	*	*	*	*	*	*	*	*	*	*	*	0
4:00	*	*	*	*	*	*	*	*	*	*	*	*	0
5:00	*	*	*	*	*	*	*	*	*	*	*	*	0
6:00	*	*	*	*	*	*	*	*	*	*	*	*	0
7:00	*	*	*	*	*	*	*	*	*	*	*	*	0
8:00	*	*	*	*	*	*	*	*	*	*	*	*	0
9:00	*	*	*	*	*	*	*	*	*	*	*	*	0
10:00	*	*	*	*	*	*	*	*	*	*	*	*	0
11:00	*	*	*	*	*	*	*	*	*	*	*	*	0
Total	38	13	25	85	305	561	292	56	6	1	0	0	1382
Grand Total	72	51	103	467	1840	3010	1386	224	24	4	3	0	7184

Stats	Percentile	15th	50th	85th	95th
Speed		32	37	41	44
Mean Speed (Average)		36.3			
10 MPH Pace Speed		30-39			
Number in Pace		4799			
Percent in Pace		66.8%			
Number > 35 MPH		4651			
Percent > 35 MPH		64.7%			

Pioneer Valley Planning Commision

60 Congress Street
Springfield, MA 01104
(413) 781-6045 www.pvpc.org

Location : Agawam
Operator : AK, GK
Counter # : 2075
Road Class : none
Direction: SB

Site Code: 10050
Station ID:
Holland Dr
S/O Mill St.

10/19/2022	> 15 - 20	> 20 - 25	> 25 - 30	> 30 - 35	> 35 - 40	> 40 - 45	> 45 - 50	> 50 - 55	> 55 - 60	> 60 - 65	> 65 - 70	> 70 MPH	Total
Time	0 - 15 MPH	MPH	MPH	MPH	MPH	MPH	MPH	MPH	MPH	MPH	MPH	MPH	
12:00 AM	*	*	*	*	*	*	*	*	*	*	*	*	0
1:00	*	*	*	*	*	*	*	*	*	*	*	*	0
2:00	*	*	*	*	*	*	*	*	*	*	*	*	0
3:00	*	*	*	*	*	*	*	*	*	*	*	*	0
4:00	*	*	*	*	*	*	*	*	*	*	*	*	0
5:00	*	*	*	*	*	*	*	*	*	*	*	*	0
6:00	*	*	*	*	*	*	*	*	*	*	*	*	0
7:00	*	*	*	*	*	*	*	*	*	*	*	*	0
8:00	*	*	*	*	*	*	*	*	*	*	*	*	0
9:00	*	*	*	*	*	*	*	*	*	*	*	*	0
10:00	1	1	0	0	0	0	0	0	0	0	0	0	2
11:00	0	0	0	0	0	0	0	0	0	0	0	0	0
12:00 PM	1	1	1	0	0	0	0	0	0	0	0	0	3
1:00	1	0	1	0	0	0	0	0	0	0	0	0	2
2:00	1	0	0	1	0	0	0	0	0	0	0	0	2
3:00	2	0	1	1	0	0	0	0	0	0	0	0	4
4:00	0	0	0	0	0	0	0	0	0	0	0	0	0
5:00	1	1	3	0	0	0	0	0	0	0	0	0	5
6:00	0	1	0	0	0	0	0	0	0	0	0	0	1
7:00	0	0	1	0	0	0	0	0	0	0	0	0	1
8:00	0	0	0	0	0	0	0	0	0	0	0	0	0
9:00	0	0	0	0	0	0	0	0	0	0	0	0	0
10:00	0	0	0	0	0	0	0	0	0	0	0	0	0
11:00	0	0	0	0	0	0	0	0	0	0	0	0	0
Total	7	4	7	2	0	0	0	0	0	0	0	0	20

Pioneer Valley Planning Commision

60 Congress Street
Springfield, MA 01104
(413) 781-6045 www.pvpc.org

Location : Agawam
Operator : AK, GK
Counter # : 2075
Road Class : none
Direction: SB

Site Code: 10050
Station ID:
Holland Dr
S/O Mill St.

10/20/2022	> 15 - 20	> 20 - 25	> 25 - 30	> 30 - 35	> 35 - 40	> 40 - 45	> 45 - 50	> 50 - 55	> 55 - 60	> 60 - 65	> 65 - 70	> 70 MPH	Total
Time	0 - 15 MPH	MPH	MPH	MPH	MPH	MPH	MPH	MPH	MPH	MPH	MPH	MPH	
12:00 AM	0	0	0	0	0	0	0	0	0	0	0	0	0
1:00	0	0	0	0	0	0	0	0	0	0	0	0	0
2:00	1	0	0	0	0	0	0	0	0	0	0	0	1
3:00	0	0	0	0	0	0	0	0	0	0	0	0	0
4:00	0	0	0	0	0	0	0	0	0	0	0	0	0
5:00	0	0	0	0	0	0	0	0	0	0	0	0	0
6:00	0	0	0	0	0	0	0	0	0	0	0	0	0
7:00	0	0	0	0	0	0	0	0	0	0	0	0	0
8:00	0	1	0	1	0	0	0	0	0	0	0	0	2
9:00	0	0	0	0	0	0	0	0	0	0	0	0	0
10:00	0	2	0	1	0	0	0	0	0	0	0	0	3
11:00	0	0	0	0	0	0	0	0	0	0	0	0	0
12:00 PM	0	0	2	0	0	0	0	0	0	0	0	0	2
1:00	3	0	0	0	0	0	0	0	0	0	0	0	3
2:00	1	1	2	0	0	0	0	0	0	0	0	0	4
3:00	0	0	1	0	0	0	0	0	0	0	0	0	1
4:00	1	0	2	0	0	0	0	0	0	0	0	0	3
5:00	2	0	0	0	1	0	0	0	0	0	0	0	3
6:00	0	0	0	0	0	0	0	0	0	0	0	0	0
7:00	0	0	0	0	0	0	0	0	0	0	0	0	0
8:00	1	0	0	0	0	0	0	0	0	0	0	0	1
9:00	0	0	0	0	0	0	0	0	0	0	0	0	0
10:00	0	0	0	0	0	0	0	0	0	0	0	0	0
11:00	0	1	0	0	0	0	0	0	0	0	0	0	1
Total	9	5	7	2	1	0	0	0	0	0	0	0	24

Pioneer Valley Planning Commision

60 Congress Street
Springfield, MA 01104
(413) 781-6045 www.pvpc.org

Location : Agawam
Operator : AK, GK
Counter # : 2075
Road Class : none
Direction: SB

Site Code: 10050
Station ID:
Holland Dr
S/O Mill St.

10/21/2022	> 15 - 20	> 20 - 25	> 25 - 30	> 30 - 35	> 35 - 40	> 40 - 45	> 45 - 50	> 50 - 55	> 55 - 60	> 60 - 65	> 65 - 70	> 70 MPH	Total
Time	0 - 15 MPH	MPH	MPH	MPH	MPH	MPH	MPH	MPH	MPH	MPH	MPH	MPH	
12:00 AM	0	0	0	0	0	0	0	0	0	0	0	0	0
1:00	0	0	0	0	0	0	0	0	0	0	0	0	0
2:00	0	1	0	0	0	0	0	0	0	0	0	0	1
3:00	0	0	0	0	0	0	0	0	0	0	0	0	0
4:00	0	0	0	0	0	0	0	0	0	0	0	0	0
5:00	0	0	0	0	0	0	0	0	0	0	0	0	0
6:00	0	0	0	0	0	0	0	0	0	0	0	0	0
7:00	0	0	0	0	0	0	0	0	0	0	0	0	0
8:00	0	0	2	0	0	0	0	0	0	0	0	0	2
9:00	0	2	0	0	0	0	0	0	0	0	0	0	2
10:00	0	0	0	0	0	0	0	0	0	0	0	0	0
11:00	1	0	0	0	0	0	0	0	0	0	0	0	1
12:00 PM	1	0	2	0	0	0	0	0	0	0	0	0	3
1:00	0	1	0	0	0	0	0	0	0	0	0	0	1
2:00	*	*	*	*	*	*	*	*	*	*	*	*	0
3:00	*	*	*	*	*	*	*	*	*	*	*	*	0
4:00	*	*	*	*	*	*	*	*	*	*	*	*	0
5:00	*	*	*	*	*	*	*	*	*	*	*	*	0
6:00	*	*	*	*	*	*	*	*	*	*	*	*	0
7:00	*	*	*	*	*	*	*	*	*	*	*	*	0
8:00	*	*	*	*	*	*	*	*	*	*	*	*	0
9:00	*	*	*	*	*	*	*	*	*	*	*	*	0
10:00	*	*	*	*	*	*	*	*	*	*	*	*	0
11:00	*	*	*	*	*	*	*	*	*	*	*	*	0
Total	2	4	4	0	0	0	0	0	0	0	0	0	10
Grand Total	18	13	18	4	1	0	0	0	0	0	0	0	54

Stats	Percentile	15th	50th	85th	95th
Speed		12	18	25	26
Mean Speed (Average)		16.9			
10 MPH Pace Speed		15-24			
Number in Pace		31			
Percent in Pace		57.4%			
Number > 25 MPH		5			
Percent > 25 MPH		9.3%			

Pioneer Valley Planning Commission

60 Congress Street
Springfield, MA 01104
(413) 781-6045 www.pvpc.org

Location : Agawam
Operator : AK, GK
Counter # : 2075
Road Class : none
Direction: NB

Site Code: 10050
Station ID:
Holland Dr
S/O Mill St.

10/19/2022	> 15 - 20	> 20 - 25	> 25 - 30	> 30 - 35	> 35 - 40	> 40 - 45	> 45 - 50	> 50 - 55	> 55 - 60	> 60 - 65	> 65 - 70	> 70 MPH	Total
Time	0 - 15 MPH	MPH	MPH	MPH	MPH	MPH	MPH	MPH	MPH	MPH	MPH	MPH	
12:00 AM	*	*	*	*	*	*	*	*	*	*	*	*	0
1:00	*	*	*	*	*	*	*	*	*	*	*	*	0
2:00	*	*	*	*	*	*	*	*	*	*	*	*	0
3:00	*	*	*	*	*	*	*	*	*	*	*	*	0
4:00	*	*	*	*	*	*	*	*	*	*	*	*	0
5:00	*	*	*	*	*	*	*	*	*	*	*	*	0
6:00	*	*	*	*	*	*	*	*	*	*	*	*	0
7:00	*	*	*	*	*	*	*	*	*	*	*	*	0
8:00	*	*	*	*	*	*	*	*	*	*	*	*	0
9:00	*	*	*	*	*	*	*	*	*	*	*	*	0
10:00	5	0	0	0	0	0	0	0	0	0	0	0	5
11:00	1	0	1	0	0	0	0	0	0	0	0	0	2
12:00 PM	0	0	1	0	0	0	0	0	0	0	0	0	1
1:00	0	2	0	1	0	0	0	0	0	0	0	0	3
2:00	0	0	0	1	0	0	0	0	0	0	0	0	1
3:00	0	2	0	1	0	0	0	0	0	0	0	0	3
4:00	0	0	0	0	0	0	0	0	0	0	0	0	0
5:00	0	0	1	0	0	0	0	0	0	0	0	0	1
6:00	0	0	1	1	0	0	0	0	0	0	0	0	2
7:00	0	0	0	0	0	0	0	0	0	0	0	0	0
8:00	0	0	0	0	0	0	0	0	0	0	0	0	0
9:00	0	0	0	0	0	0	0	0	0	0	0	0	0
10:00	0	0	0	0	0	0	0	0	0	0	0	0	0
11:00	0	0	0	0	0	0	0	0	0	0	0	0	0
Total	6	4	4	4	0	0	0	0	0	0	0	0	18

Pioneer Valley Planning Commision

60 Congress Street
Springfield, MA 01104
(413) 781-6045 www.pvpc.org

Location : Agawam
Operator : AK, GK
Counter # : 2075
Road Class : none
Direction: NB

Site Code: 10050
Station ID:
Holland Dr
S/O Mill St.

10/20/2022	> 15 - 20	> 20 - 25	> 25 - 30	> 30 - 35	> 35 - 40	> 40 - 45	> 45 - 50	> 50 - 55	> 55 - 60	> 60 - 65	> 65 - 70	> 70 MPH	Total
Time	0 - 15 MPH	MPH	MPH	MPH	MPH	MPH	MPH	MPH	MPH	MPH	MPH	MPH	
12:00 AM	0	0	0	0	0	0	0	0	0	0	0	0	0
1:00	0	1	0	0	0	0	0	0	0	0	0	0	1
2:00	0	0	0	0	0	0	0	0	0	0	0	0	0
3:00	0	0	0	0	0	0	0	0	0	0	0	0	0
4:00	0	0	0	0	0	0	0	0	0	0	0	0	0
5:00	0	0	0	0	0	0	0	0	0	0	0	0	0
6:00	0	0	0	0	0	0	0	0	0	0	0	0	0
7:00	0	2	0	0	0	0	0	0	0	0	0	0	2
8:00	0	0	0	0	0	0	0	0	0	0	0	0	0
9:00	2	0	0	0	0	0	0	0	0	0	0	0	2
10:00	1	2	2	0	0	0	0	0	0	0	0	0	5
11:00	1	0	1	0	0	0	0	0	0	0	0	0	2
12:00 PM	0	1	1	0	0	0	0	0	0	0	0	0	2
1:00	2	1	1	0	0	0	0	0	0	0	0	0	4
2:00	0	1	0	0	0	0	0	0	0	0	0	0	1
3:00	1	0	0	0	0	0	0	0	0	0	0	0	1
4:00	0	0	0	0	0	0	0	0	0	0	0	0	0
5:00	1	0	2	0	0	0	0	0	0	0	0	0	3
6:00	0	1	0	0	0	0	0	0	0	0	0	0	1
7:00	0	0	0	0	0	0	0	0	0	0	0	0	0
8:00	0	0	0	0	0	0	0	0	0	0	0	0	0
9:00	0	0	0	0	0	0	0	0	0	0	0	0	0
10:00	0	0	0	0	0	0	0	0	0	0	0	0	0
11:00	0	0	0	0	0	0	0	0	0	0	0	0	0
Total	8	9	7	0	0	0	0	0	0	0	0	0	24

Pioneer Valley Planning Commision

60 Congress Street
Springfield, MA 01104
(413) 781-6045 www.pvpc.org

Location : Agawam
Operator : AK, GK
Counter # : 2075
Road Class : none
Direction: NB

Site Code: 10050
Station ID:
Holland Dr
S/O Mill St.

10/21/2022	> 15 - 20	> 20 - 25	> 25 - 30	> 30 - 35	> 35 - 40	> 40 - 45	> 45 - 50	> 50 - 55	> 55 - 60	> 60 - 65	> 65 - 70	> 70 MPH	Total
Time	0 - 15 MPH	MPH	MPH	MPH	MPH	MPH	MPH	MPH	MPH	MPH	MPH	MPH	
12:00 AM	0	0	0	0	0	0	0	0	0	0	0	0	0
1:00	0	0	0	0	0	0	0	0	0	0	0	0	0
2:00	0	0	0	0	0	0	0	0	0	0	0	0	0
3:00	0	0	0	0	0	0	0	0	0	0	0	0	0
4:00	0	0	0	0	0	0	0	0	0	0	0	0	0
5:00	0	0	0	0	0	0	0	0	0	0	0	0	0
6:00	0	0	0	0	0	0	0	0	0	0	0	0	0
7:00	1	1	1	0	0	0	0	0	0	0	0	0	3
8:00	0	0	0	0	0	0	0	0	0	0	0	0	0
9:00	3	1	0	0	0	0	0	0	0	0	0	0	4
10:00	1	1	1	0	0	0	0	0	0	0	0	0	3
11:00	0	2	0	0	0	0	0	0	0	0	0	0	2
12:00 PM	0	1	0	0	0	0	0	0	0	0	0	0	1
1:00	1	0	0	0	0	0	0	0	0	0	0	0	1
2:00	*	*	*	*	*	*	*	*	*	*	*	*	0
3:00	*	*	*	*	*	*	*	*	*	*	*	*	0
4:00	*	*	*	*	*	*	*	*	*	*	*	*	0
5:00	*	*	*	*	*	*	*	*	*	*	*	*	0
6:00	*	*	*	*	*	*	*	*	*	*	*	*	0
7:00	*	*	*	*	*	*	*	*	*	*	*	*	0
8:00	*	*	*	*	*	*	*	*	*	*	*	*	0
9:00	*	*	*	*	*	*	*	*	*	*	*	*	0
10:00	*	*	*	*	*	*	*	*	*	*	*	*	0
11:00	*	*	*	*	*	*	*	*	*	*	*	*	0
Total	6	6	2	0	0	0	0	0	0	0	0	0	14
Grand Total	20	19	13	4	0	0	0	0	0	0	0	0	56

Stats	Percentile	15th	50th	85th	95th
Speed		12	18	23	25
Mean Speed (Average)		15.8			
10 MPH Pace Speed		15-24			
Number in Pace		32			
Percent in Pace		57.1%			
Number > 25 MPH		4			
Percent > 25 MPH		7.1%			

Pioneer Valley Planning Commission

60 Congress Street
Springfield, MA 01104
(413) 781-6045 www.pvpc.org

Location : Agawam
Operator : AK, GK
Counter # : 2075
Road Class : none
Direction: Combined

Site Code: 10050
Station ID:
Holland Dr
S/O Mill St.

10/19/2022	> 15 - 20	> 20 - 25	> 25 - 30	> 30 - 35	> 35 - 40	> 40 - 45	> 45 - 50	> 50 - 55	> 55 - 60	> 60 - 65	> 65 - 70	> 70 MPH	Total
Time	0 - 15 MPH	MPH	MPH	MPH	MPH	MPH	MPH	MPH	MPH	MPH	MPH	MPH	
12:00 AM	*	*	*	*	*	*	*	*	*	*	*	*	0
1:00	*	*	*	*	*	*	*	*	*	*	*	*	0
2:00	*	*	*	*	*	*	*	*	*	*	*	*	0
3:00	*	*	*	*	*	*	*	*	*	*	*	*	0
4:00	*	*	*	*	*	*	*	*	*	*	*	*	0
5:00	*	*	*	*	*	*	*	*	*	*	*	*	0
6:00	*	*	*	*	*	*	*	*	*	*	*	*	0
7:00	*	*	*	*	*	*	*	*	*	*	*	*	0
8:00	*	*	*	*	*	*	*	*	*	*	*	*	0
9:00	*	*	*	*	*	*	*	*	*	*	*	*	0
10:00	6	1	0	0	0	0	0	0	0	0	0	0	7
11:00	1	0	1	0	0	0	0	0	0	0	0	0	2
12:00 PM	1	1	2	0	0	0	0	0	0	0	0	0	4
1:00	1	2	1	1	0	0	0	0	0	0	0	0	5
2:00	1	0	0	2	0	0	0	0	0	0	0	0	3
3:00	2	2	1	2	0	0	0	0	0	0	0	0	7
4:00	0	0	0	0	0	0	0	0	0	0	0	0	0
5:00	1	1	4	0	0	0	0	0	0	0	0	0	6
6:00	0	1	1	1	0	0	0	0	0	0	0	0	3
7:00	0	0	1	0	0	0	0	0	0	0	0	0	1
8:00	0	0	0	0	0	0	0	0	0	0	0	0	0
9:00	0	0	0	0	0	0	0	0	0	0	0	0	0
10:00	0	0	0	0	0	0	0	0	0	0	0	0	0
11:00	0	0	0	0	0	0	0	0	0	0	0	0	0
Total	13	8	11	6	0	0	0	0	0	0	0	0	38

Pioneer Valley Planning Commision

60 Congress Street
Springfield, MA 01104
(413) 781-6045 www.pvpc.org

Location : Agawam
Operator : AK, GK
Counter # : 2075
Road Class : none
Direction: Combined

Site Code: 10050
Station ID:
Holland Dr
S/O Mill St.

10/20/2022	> 15 - 20	> 20 - 25	> 25 - 30	> 30 - 35	> 35 - 40	> 40 - 45	> 45 - 50	> 50 - 55	> 55 - 60	> 60 - 65	> 65 - 70	> 70 MPH	Total
Time	0 - 15 MPH	MPH	MPH	MPH	MPH	MPH	MPH	MPH	MPH	MPH	MPH	MPH	
12:00 AM	0	0	0	0	0	0	0	0	0	0	0	0	0
1:00	0	1	0	0	0	0	0	0	0	0	0	0	1
2:00	1	0	0	0	0	0	0	0	0	0	0	0	1
3:00	0	0	0	0	0	0	0	0	0	0	0	0	0
4:00	0	0	0	0	0	0	0	0	0	0	0	0	0
5:00	0	0	0	0	0	0	0	0	0	0	0	0	0
6:00	0	0	0	0	0	0	0	0	0	0	0	0	0
7:00	0	2	0	0	0	0	0	0	0	0	0	0	2
8:00	0	1	0	1	0	0	0	0	0	0	0	0	2
9:00	2	0	0	0	0	0	0	0	0	0	0	0	2
10:00	1	4	2	1	0	0	0	0	0	0	0	0	8
11:00	1	0	1	0	0	0	0	0	0	0	0	0	2
12:00 PM	0	1	3	0	0	0	0	0	0	0	0	0	4
1:00	5	1	1	0	0	0	0	0	0	0	0	0	7
2:00	1	2	2	0	0	0	0	0	0	0	0	0	5
3:00	1	0	1	0	0	0	0	0	0	0	0	0	2
4:00	1	0	2	0	0	0	0	0	0	0	0	0	3
5:00	3	0	2	0	1	0	0	0	0	0	0	0	6
6:00	0	1	0	0	0	0	0	0	0	0	0	0	1
7:00	0	0	0	0	0	0	0	0	0	0	0	0	0
8:00	1	0	0	0	0	0	0	0	0	0	0	0	1
9:00	0	0	0	0	0	0	0	0	0	0	0	0	0
10:00	0	0	0	0	0	0	0	0	0	0	0	0	0
11:00	0	1	0	0	0	0	0	0	0	0	0	0	1
Total	17	14	14	2	1	0	0	0	0	0	0	0	48

Pioneer Valley Planning Commision

60 Congress Street
Springfield, MA 01104
(413) 781-6045 www.pvpc.org

Location : Agawam
Operator : AK, GK
Counter # : 2075
Road Class : none
Direction: Combined

Site Code: 10050
Station ID:
Holland Dr
S/O Mill St.

10/21/2022	> 15 - 20	> 20 - 25	> 25 - 30	> 30 - 35	> 35 - 40	> 40 - 45	> 45 - 50	> 50 - 55	> 55 - 60	> 60 - 65	> 65 - 70	> 70 MPH	Total
Time	0 - 15 MPH	MPH	MPH	MPH	MPH	MPH	MPH	MPH	MPH	MPH	MPH	MPH	
12:00 AM	0	0	0	0	0	0	0	0	0	0	0	0	0
1:00	0	0	0	0	0	0	0	0	0	0	0	0	0
2:00	0	1	0	0	0	0	0	0	0	0	0	0	1
3:00	0	0	0	0	0	0	0	0	0	0	0	0	0
4:00	0	0	0	0	0	0	0	0	0	0	0	0	0
5:00	0	0	0	0	0	0	0	0	0	0	0	0	0
6:00	0	0	0	0	0	0	0	0	0	0	0	0	0
7:00	1	1	1	0	0	0	0	0	0	0	0	0	3
8:00	0	0	2	0	0	0	0	0	0	0	0	0	2
9:00	3	3	0	0	0	0	0	0	0	0	0	0	6
10:00	1	1	1	0	0	0	0	0	0	0	0	0	3
11:00	1	2	0	0	0	0	0	0	0	0	0	0	3
12:00 PM	1	1	2	0	0	0	0	0	0	0	0	0	4
1:00	1	1	0	0	0	0	0	0	0	0	0	0	2
2:00	*	*	*	*	*	*	*	*	*	*	*	*	0
3:00	*	*	*	*	*	*	*	*	*	*	*	*	0
4:00	*	*	*	*	*	*	*	*	*	*	*	*	0
5:00	*	*	*	*	*	*	*	*	*	*	*	*	0
6:00	*	*	*	*	*	*	*	*	*	*	*	*	0
7:00	*	*	*	*	*	*	*	*	*	*	*	*	0
8:00	*	*	*	*	*	*	*	*	*	*	*	*	0
9:00	*	*	*	*	*	*	*	*	*	*	*	*	0
10:00	*	*	*	*	*	*	*	*	*	*	*	*	0
11:00	*	*	*	*	*	*	*	*	*	*	*	*	0
Total	8	10	6	0	0	0	0	0	0	0	0	0	24
Grand Total	38	32	31	8	1	0	0	0	0	0	0	0	110

Stats	Percentile	15th	50th	85th	95th
Speed		12	18	24	25
Mean Speed (Average)		16.4			
10 MPH Pace Speed		15-24			
Number in Pace		63			
Percent in Pace		57.3%			
Number > 25 MPH		9			
Percent > 25 MPH		8.2%			

APPENDIX 3

Pioneer Valley Planning Commission

60 Congress Street
Springfield, MA 01104
(413) 781-6045 www.pvpc.org

Location : Agawam
Counter # : 1009
Operator : Geoffrey Klafeta
Fun. Class : U6

File Name : 5688 AM
Site Code : 5688
Start Date : 11/9/2022
Page No : 1

Groups Printed- Unshifted

Start Time	Cooper St From North					Mill St From East					Holland Dr From South					Mill St From West					Int. Total
	Right	Thru	Left	Trucks	App. Total	Right	Thru	Left	Trucks	App. Total	Right	Thru	Left	Trucks	App. Total	Right	Thru	Left	Trucks	App. Total	
06:30 AM	6	0	7	0	13	17	33	1	0	51	0	0	0	0	0	0	58	17	0	75	139
06:45 AM	34	0	24	1	59	50	60	0	1	111	1	0	0	0	1	0	58	50	1	109	280
Total	40	0	31	1	72	67	93	1	1	162	1	0	0	0	1	0	116	67	1	184	419
07:00 AM	53	0	34	0	87	42	73	0	1	116	0	0	0	0	0	0	29	44	1	74	277
07:15 AM	26	0	20	1	47	13	56	0	0	69	1	0	0	0	1	0	65	17	0	82	199
07:30 AM	24	1	4	0	29	8	63	0	0	71	0	0	0	0	0	0	86	19	1	106	206
07:45 AM	11	0	2	2	15	9	62	0	2	73	0	0	1	0	1	0	86	38	3	127	216
Total	114	1	60	3	178	72	254	0	3	329	1	0	1	0	2	0	266	118	5	389	898
08:00 AM	9	0	7	0	16	10	57	0	0	67	0	0	0	0	0	0	72	31	3	106	189
08:15 AM	19	0	8	0	27	6	56	1	4	67	1	0	0	0	1	0	91	30	1	122	217
08:30 AM	18	0	5	2	25	6	60	0	4	70	0	0	0	0	0	1	78	15	3	97	192
08:45 AM	24	0	6	1	31	3	72	0	0	75	0	0	0	0	0	0	77	17	2	96	202
Total	70	0	26	3	99	25	245	1	8	279	1	0	0	0	1	1	318	93	9	421	800
Grand Total	224	1	117	7	349	164	592	2	12	770	3	0	1	0	4	1	700	278	15	994	2117
Apprch %	64.2	0.3	33.5	2		21.3	76.9	0.3	1.6		75	0	25	0		0.1	70.4	28	1.5		
Total %	10.6	0	5.5	0.3	16.5	7.7	28	0.1	0.6	36.4	0.1	0	0	0	0.2	0	33.1	13.1	0.7	47	

Start Time	Cooper St From North					Mill St From East					Holland Dr From South					Mill St From West					Int. Total
	Right	Thru	Left	Trucks	App. Total	Right	Thru	Left	Trucks	App. Total	Right	Thru	Left	Trucks	App. Total	Right	Thru	Left	Trucks	App. Total	
Peak Hour Analysis From 06:30 AM to 08:45 AM - Peak 1 of 1																					
Peak Hour for Entire Intersection Begins at 06:45 AM																					
06:45 AM	34	0	24	1	59	50	60	0	1	111	1	0	0	0	1	0	58	50	1	109	280
07:00 AM	53	0	34	0	87	42	73	0	1	116	0	0	0	0	0	0	29	44	1	74	277
07:15 AM	26	0	20	1	47	13	56	0	0	69	1	0	0	0	1	0	65	17	0	82	199
07:30 AM	24	1	4	0	29	8	63	0	0	71	0	0	0	0	0	0	86	19	1	106	206
Total Volume	137	1	82	2	222	113	252	0	2	367	2	0	0	0	2	0	238	130	3	371	962
% App. Total	61.7	0.5	36.9	0.9		30.8	68.7	0	0.5		100	0	0	0		0	64.2	35	0.8		
PHF	.646	.250	.603	.500	.638	.565	.863	.000	.500	.791	.500	.000	.000	.000	.500	.000	.692	.650	.750	.851	.859

Pioneer Valley Planning Commission

60 Congress Street
Springfield, MA 01104

(413) 781-6045 www.pvpc.org

Location : Agawam
Counter # : 1009
Operator : Geoffrey Klafeta
Fun. Class : U6

File Name : 5688 Dismissal
Site Code : 00000124
Start Date : 11/10/2022
Page No : 1

Groups Printed- Unshifted

Start Time	Cooper St From North					Mill St From East					Holland Dr From South					Mill St From West					Int. Total
	Right	Thru	Left	Trucks	App. Total	Right	Thru	Left	Trucks	App. Total	Right	Thru	Left	Trucks	App. Total	Right	Thru	Left	Trucks	App. Total	
01:00 PM	16	0	6	0	22	8	57	1	0	66	1	0	0	0	1	0	51	21	0	72	161
01:15 PM	23	0	8	0	31	23	71	0	3	97	0	0	0	0	0	0	50	33	0	83	211
01:30 PM	30	0	10	0	40	35	71	0	2	108	0	0	0	0	0	0	61	45	5	111	259
01:45 PM	74	0	46	1	121	9	76	1	5	91	0	0	0	0	0	0	86	30	1	117	329
Total	143	0	70	1	214	75	275	2	10	362	1	0	0	0	1	0	248	129	6	383	960
02:00 PM	40	0	24	1	65	14	86	1	3	104	1	0	1	0	2	0	58	24	2	84	255
02:15 PM	31	1	17	0	49	15	74	0	1	90	0	0	0	0	0	0	95	44	0	139	278
02:30 PM	30	0	15	0	45	12	85	0	3	100	0	0	1	1	2	0	80	33	3	116	263
02:45 PM	38	1	17	0	56	13	99	0	1	113	0	0	0	0	0	0	76	30	4	110	279
Total	139	2	73	1	215	54	344	1	8	407	1	0	2	1	4	0	309	131	9	449	1075
03:00 PM	24	0	10	0	34	10	97	0	0	107	0	0	0	0	0	0	55	27	1	83	224
03:15 PM	28	0	8	0	36	10	120	1	5	136	1	0	0	1	2	0	78	27	1	106	280
03:30 PM	32	0	11	0	43	9	130	0	0	139	0	0	0	0	0	0	66	31	2	99	281
03:45 PM	20	0	9	0	29	14	133	2	3	152	2	0	0	0	2	0	71	15	1	87	270
Total	104	0	38	0	142	43	480	3	8	534	3	0	0	1	4	0	270	100	5	375	1055
Grand Total	386	2	181	2	571	172	1099	6	26	1303	5	0	2	2	9	0	827	360	20	1207	3090
Apprch %	67.6	0.4	31.7	0.4		13.2	84.3	0.5	2		55.6	0	22.2	22.2		0	68.5	29.8	1.7		
Total %	12.5	0.1	5.9	0.1	18.5	5.6	35.6	0.2	0.8	42.2	0.2	0	0.1	0.1	0.3	0	26.8	11.7	0.6	39.1	

Start Time	Cooper St From North					Mill St From East					Holland Dr From South					Mill St From West					Int. Total
	Right	Thru	Left	Trucks	App. Total	Right	Thru	Left	Trucks	App. Total	Right	Thru	Left	Trucks	App. Total	Right	Thru	Left	Trucks	App. Total	
Peak Hour Analysis From 01:00 PM to 03:45 PM - Peak 1 of 1																					
Peak Hour for Entire Intersection Begins at 01:45 PM																					
01:45 PM	74	0	46	1	121	9	76	1	5	91	0	0	0	0	0	0	86	30	1	117	329
02:00 PM	40	0	24	1	65	14	86	1	3	104	1	0	1	0	2	0	58	24	2	84	255
02:15 PM	31	1	17	0	49	15	74	0	1	90	0	0	0	0	0	0	95	44	0	139	278
02:30 PM	30	0	15	0	45	12	85	0	3	100	0	0	1	1	2	0	80	33	3	116	263
Total Volume	175	1	102	2	280	50	321	2	12	385	1	0	2	1	4	0	319	131	6	456	1125
% App. Total	62.5	0.4	36.4	0.7		13	83.4	0.5	3.1		25	0	50	25		0	70	28.7	1.3		
PHF	.591	.250	.554	.500	.579	.833	.933	.500	.600	.925	.250	.000	.500	.250	.500	.000	.839	.744	.500	.820	.855

Pioneer Valley Planning Commission

60 Congress Street
Springfield, MA 01104

(413) 781-6045 www.pvpc.org

Location : Agawam
Counter # : 1009
Operator : Geoffrey Klafeta
Fun. Class : 6

File Name : 5688 pm
Site Code : 5688
Start Date : 1/5/2023
Page No : 1

Groups Printed- Unshifted

Start Time	Cooper St From North					Mill St From East					Holland Dr From South					Mill St From West					Int. Total
	Right	Thru	Left	Trucks	App. Total	Right	Thru	Left	Trucks	App. Total	Right	Thru	Left	Trucks	App. Total	Right	Thru	Left	Trucks	App. Total	
04:00 PM	26	0	9	1	36	9	106	1	2	118	0	0	0	0	0	0	80	17	0	97	251
04:15 PM	20	0	10	0	30	13	113	0	0	126	0	0	0	0	0	0	85	19	1	105	261
04:30 PM	27	0	4	0	31	8	120	0	0	128	0	0	0	0	0	0	63	32	0	95	254
04:45 PM	33	0	5	0	38	3	108	2	0	113	1	0	0	0	1	0	75	19	1	95	247
Total	106	0	28	1	135	33	447	3	2	485	1	0	0	0	1	0	303	87	2	392	1013
05:00 PM	31	1	4	0	36	15	106	1	0	122	0	0	1	0	1	0	67	26	1	94	253
05:15 PM	27	0	2	0	29	9	103	0	1	113	2	0	0	0	2	0	50	22	0	72	216
05:30 PM	24	0	3	0	27	11	105	0	1	117	0	0	0	0	0	0	71	20	0	91	235
05:45 PM	21	0	13	1	35	10	96	0	0	106	0	0	0	0	0	0	95	14	1	110	251
Total	103	1	22	1	127	45	410	1	2	458	2	0	1	0	3	0	283	82	2	367	955
Grand Total	209	1	50	2	262	78	857	4	4	943	3	0	1	0	4	0	586	169	4	759	1968
Apprch %	79.8	0.4	19.1	0.8		8.3	90.9	0.4	0.4		75	0	25	0		0	77.2	22.3	0.5		
Total %	10.6	0.1	2.5	0.1	13.3	4	43.5	0.2	0.2	47.9	0.2	0	0.1	0	0.2	0	29.8	8.6	0.2	38.6	

Start Time	Cooper St From North					Mill St From East					Holland Dr From South					Mill St From West					Int. Total
	Right	Thru	Left	Trucks	App. Total	Right	Thru	Left	Trucks	App. Total	Right	Thru	Left	Trucks	App. Total	Right	Thru	Left	Trucks	App. Total	
Peak Hour Analysis From 04:00 PM to 05:45 PM - Peak 1 of 1																					
Peak Hour for Entire Intersection Begins at 04:15 PM																					
04:15 PM	20	0	10	0	30	13	113	0	0	126	0	0	0	0	0	0	85	19	1	105	261
04:30 PM	27	0	4	0	31	8	120	0	0	128	0	0	0	0	0	0	63	32	0	95	254
04:45 PM	33	0	5	0	38	3	108	2	0	113	1	0	0	0	1	0	75	19	1	95	247
05:00 PM	31	1	4	0	36	15	106	1	0	122	0	0	1	0	1	0	67	26	1	94	253
Total Volume	111	1	23	0	135	39	447	3	0	489	1	0	1	0	2	0	290	96	3	389	1015
% App. Total	82.2	0.7	17	0		8	91.4	0.6	0		50	0	50	0		0	74.6	24.7	0.8		
PHF	.841	.250	.575	.000	.888	.650	.931	.375	.000	.955	.250	.000	.250	.000	.500	.000	.853	.750	.750	.926	.972

APPENDIX 4

Hour	Major Volume	Minor Volume	Total Volume	Peds/h	Gaps/h	1A (70%)	1A (56%)	1B (70%)	1B (56%)	2 (70%)	3A (70%)	3B (56%)	4A (70%)	4B (56%)
07 - 08	690	80	770	0	0	No	No	Yes	Yes	No	No	No	No	No
08 - 09	698	114	814	0	0	No	Yes	Yes	Yes	No	No	No	No	No
09 - 10	668	80	748	0	0	No	No	Yes	Yes	No	No	No	No	No
10 - 11	514	80	597	0	0	No	No	No	Yes	No	No	No	No	No
11 - 12	634	91	729	0	0	No	No	Yes	Yes	No	No	No	No	No
12 - 13	654	112	768	0	0	No	Yes	Yes	Yes	No	No	No	No	No
13 - 14	601	102	704	0	0	No	No	No	Yes	No	No	No	No	No
14 - 15	622	98	723	0	0	No	No	No	Yes	No	No	No	No	No
15 - 16	857	141	999	0	0	Yes	Yes	Yes	Yes	Yes	No	No	No	No
16 - 17	916	144	1062	0	0	Yes	Yes	Yes	Yes	Yes	No	No	No	No
17 - 18	987	152	1139	0	0	Yes	Yes	Yes	Yes	Yes	No	Yes	No	No
18 - 19	835	128	965	0	0	No	Yes	Yes	Yes	Yes	No	No	No	No
Total	8676	1322	10018	0	0	3	6	9	12	4	0	1	0	0

Warrants	
Warrant 1: Eight-Hour Vehicular Volume	✓
A. Minimum Vehicular Volumes (Both major approaches --and-- higher minor approach) --or--	
B. Interruption of Continuous Traffic (Both major approaches --and-- higher minor approach) --or--	✓
56% Vehicular --and-- Interruption Volumes (Both major approaches --and-- higher minor approach)	
Warrant 2: Four-Hour Vehicular Volume	✓
Four-Hour Vehicular Volume (Both major approaches --and-- higher minor approach)	✓
Warrant 3: Peak Hour	✓
A. Peak-Hour Conditions (Minor delay -- and-- minor volume --and-- total volume) --or--	
B. Peak-Hour Vehicular Volumes (Both major approaches --and-- higher minor approach)	✓
Warrant 4: Pedestrian Volume	
A. Four Hour Volumes --or--	
B. One-Hour Volumes	
Warrant 5: School Crossing	
Gaps Same Period --and--	
Student Volumes	
Nearest Traffic Control Signal (optional)	
Warrant 6: Coordinated Signal System	
Degree of Platooning (Predominant direction or both directions)	
Warrant 7: Crash Experience	
A. Adequate trials of alternatives, observance and enforcement failed --and--	
B. Reported crashes susceptible to correction by signal (12-month period) --and--	
C. 56% Volumes for Warrants 1A, 1B, --or-- 4 are satisfied	✓
Warrant 8: Roadway Network	
A. Weekday Volume (Peak hour total --and-- projected warrants 1, 2, or 3) --or--	
B. Weekend Volume (Five hours total)	
Warrant 9: Grade Crossing	
A. Grade Crossing within 140 ft --and--	
B. Peak-Hour Vehicular Volumes	

Hour	Major Volume	Minor Volume	Total Volume	Peds/h	Gaps/h	1A (100%)	1A (80%)	1B (100%)	1B (80%)	2 (100%)	3A (100%)	3B (80%)	4A (100%)	4B (80%)
07 - 08	690	80	770	0	0	No	No	No	No	No	No	No	No	No
08 - 09	698	114	814	0	0	No	No	No	No	No	No	No	No	No
09 - 10	668	80	748	0	0	No	No	No	No	No	No	No	No	No
10 - 11	514	80	597	0	0	No	No	No	No	No	No	No	No	No
11 - 12	634	91	729	0	0	No	No	No	No	No	No	No	No	No
12 - 13	654	112	768	0	0	No	No	No	No	No	No	No	No	No
13 - 14	601	102	704	0	0	No	No	No	No	No	No	No	No	No
14 - 15	622	98	723	0	0	No	No	No	No	No	No	No	No	No
15 - 16	857	141	999	0	0	No	No	No	Yes	No	No	No	No	No
16 - 17	916	144	1062	0	0	No	No	Yes	Yes	No	No	No	No	No
17 - 18	987	152	1139	0	0	No	No	Yes	Yes	No	No	No	No	No
18 - 19	835	128	965	0	0	No	No	No	Yes	No	No	No	No	No
Total	8676	1322	10018	0	0	0	0	2	4	0	0	0	0	0

Warrants

Warrant 1: Eight-Hour Vehicular Volume

A. Minimum Vehicular Volumes (Both major approaches --and-- higher minor approach) --or--
B. Interruption of Continuous Traffic (Both major approaches --and-- higher minor approach) --or--
80% Vehicular --and-- Interruption Volumes (Both major approaches --and-- higher minor approach)

Warrant 2: Four-Hour Vehicular Volume

Four-Hour Vehicular Volume (Both major approaches --and-- higher minor approach)
--

Warrant 3: Peak Hour

A. Peak-Hour Conditions (Minor delay -- and-- minor volume --and-- total volume) --or--
B. Peak-Hour Vehicular Volumes (Both major approaches --and-- higher minor approach)

Warrant 4: Pedestrian Volume

A. Four Hour Volumes --or--
B. One-Hour Volumes

Warrant 5: School Crossing

Gaps Same Period --and--
Student Volumes
Nearest Traffic Control Signal (optional)

Warrant 6: Coordinated Signal System

Degree of Platooning (Predominant direction or both directions)

Warrant 7: Crash Experience

A. Adequate trials of alternatives, observance and enforcement failed --and--
B. Reported crashes susceptible to correction by signal (12-month period) --and--
C. 80% Volumes for Warrants 1A, 1B, --or-- 4 are satisfied

Warrant 8: Roadway Network

A. Weekday Volume (Peak hour total --and-- projected warrants 1, 2, or 3) --or--
B. Weekend Volume (Five hours total)

Warrant 9: Grade Crossing

A. Grade Crossing within 140 ft --and--
B. Peak-Hour Vehicular Volumes